




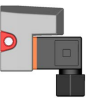





Prijslijst Nederland
geldig vanaf februari 2024

Variabele doorstroommeters





	variabele doorstroommeter type 335	4
	variabele doorstroommeter type 350	6
	korte uitvoering	8
	speciale uitvoering PVDF-HP	10
	speciale uitvoering PVDF	12
	toebehoren	13
	speciale uitvoering voor type 335/350	14
	speciale schaalverdeling voor korte uitvoering	18
	vervangingsonderdelen	21
	Index	39

variabele doorstroommeter type 335

variabele doorstroommeter type 335

doorstroommeter type 335
vlotter in PVDF met magneet
met lijmmof PVC-U metrisch O-ring EPDM

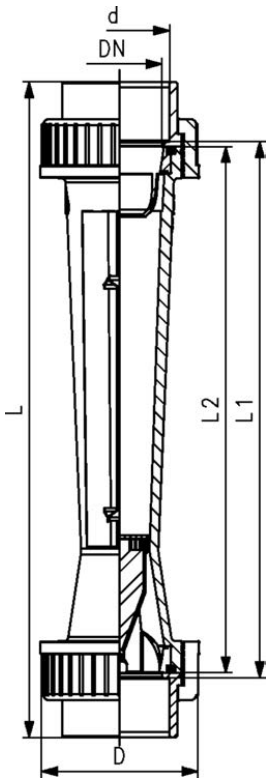


uitvoering:

- standaard geleidestang PVDF met RVS kern (V4A) voor DN50 en DN65

optioneel:

- 4-20 mA sensor
- grenswaardecontacten
- speciale schaalverdeling voor andere media
- wartelmoeren en verbindingsonderdelen in andere materialen op aanvraag



schaal (L/h)	d afm. (mm)	DN (inch)	DN (mm)	PVC-U transparant Code	EUR gewicht (kg)	Polyamide Code	EUR gewicht (kg)
50 - 500	32	1	25	199 335 100	280,70	199 335 120	351,10
100 - 1000	32	1	25	199 335 101	280,70	199 335 121	351,10
150 - 1500	40	1 1/4	32	199 335 102	332,60	199 335 122	404,40
250 - 2500	40	1 1/4	32	199 335 103	332,60	199 335 123	404,40
200 - 2000	50	1 1/2	40	199 335 104	396,00	199 335 124	493,70
300 - 3000	50	1 1/2	40	199 335 105	396,00	199 335 125	493,70
600 - 6000	50	1 1/2	40	199 335 106	396,00	199 335 126	493,70
600 - 6000	63	2	50	199 335 107	634,90	199 335 127	793,10
1000 - 10000	63	2	50	199 335 108	634,90	199 335 128	793,10
1500 - 15000	63	2	50	199 335 109	634,90	199 335 129	793,10
2000 - 20000	75	2 1/2	65	199 335 110	807,30	199 335 130	1.008,90
3000 - 30000	75	2 1/2	65	199 335 111	807,30	199 335 131	1.008,90
8000 - 60000	75	2 1/2	65	199 335 112	807,30	199 335 132	1.008,90

schaal (L/h)	Polysulfon Code	EUR gewicht (kg)	D (mm)	L (mm)	L1 (mm)	L2 (mm)	G (inch)
50 - 500	199 335 140	348,10	58	385	341	335	1 1/2
100 - 1000	199 335 141	348,10	58	385	341	335	1 1/2
150 - 1500	199 335 142	420,30	72	393	341	335	2
250 - 2500	199 335 143	420,30	72	393	341	335	2
200 - 2000	199 335 144	500,50	83	403	341	335	2 1/4
300 - 3000	199 335 145	500,50	83	403	341	335	2 1/4
600 - 6000	199 335 146	500,50	83	403	341	335	2 1/4
600 - 6000	199 335 147	852,50	101	417	341	335	2 3/4
1000 - 10000	199 335 148	852,50	101	417	341	335	2 3/4
1500 - 15000	199 335 149	852,50	101	417	341	335	2 3/4
2000 - 20000	199 335 150	986,50	135	429	341	335	3 1/2
3000 - 30000	199 335 151	986,50	135	429	341	335	3 1/2
8000 - 60000	199 335 152	986,50	135	429	341	335	3 1/2

doorstroommeter type 335
vlotter in PVDF zonder magneet
met lijmmof PVC-U metrisch
O-ring EPDM

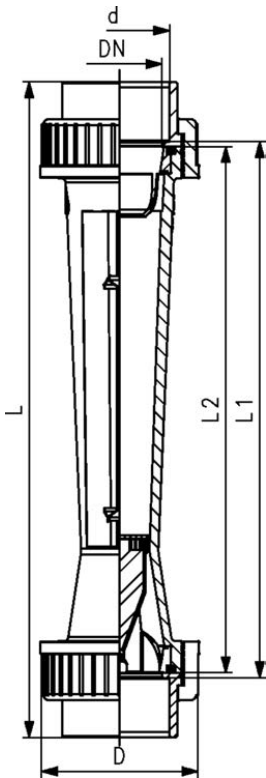


uitvoering:

- standaard geleidestang PVDF met RVS kern (V4A) voor DN50 en DN65

optioneel:

- 4-20 mA sensor
- grenswaardecontacten
- speciale schaalverdeling voor andere media
- wartelmoeren en verbindingsonderdelen in andere materialen op aanvraag



schaal (L/h)	d (mm)	DN (mm)	afm. (inch)	PVC-U transparant Code	EUR gewicht (kg)	Polyamide Code	EUR gewicht (kg)
50 - 500	32	25	1	199 335 000	198,60	199 335 020	247,60
100 - 1000	32	25	1	199 335 001	198,60	199 335 021	247,60
150 - 1500	40	32	1 ¼	199 335 002	236,20	199 335 022	283,50
250 - 2500	40	32	1 ¼	199 335 003	236,20	199 335 023	283,50
200 - 2000	50	40	1 ½	199 335 004	267,90	199 335 024	333,70
300 - 3000	50	40	1 ½	199 335 005	267,90	199 335 025	333,70
600 - 6000	50	40	1 ½	199 335 006	267,90	199 335 026	333,70
600 - 6000	63	50	2	199 335 007	425,90	199 335 027	532,40
1000 - 10000	63	50	2	199 335 008	425,90	199 335 028	532,40
1500 - 15000	63	50	2	199 335 009	425,90	199 335 029	532,40
2000 - 20000	75	65	2 ½	199 335 010	669,20	199 335 030	836,30
3000 - 30000	75	65	2 ½	199 335 011	669,20	199 335 031	836,30
8000 - 60000	75	65	2 ½	199 335 012	669,20	199 335 032	836,30

schaal (L/h)	Polysulfon Code	EUR gewicht (kg)	D (mm)	L (mm)	L1 (mm)	L2 (mm)	G (inch)
50 - 500	199 335 040	240,40	58	385	341	335	1 ½
100 - 1000	199 335 041	240,40	58	385	341	335	1 ½
150 - 1500	199 335 042	287,70	72	393	341	335	2
250 - 2500	199 335 043	287,70	72	393	341	335	2
200 - 2000	199 335 044	333,60	83	403	341	335	2 ¼
300 - 3000	199 335 045	333,60	83	403	341	335	2 ¼
600 - 6000	199 335 046	333,60	83	403	341	335	2 ¼
600 - 6000	199 335 047	521,50	101	417	341	335	2 ¼
1000 - 10000	199 335 048	521,50	101	417	341	335	2 ¼
1500 - 15000	199 335 049	521,50	101	417	341	335	2 ¼
2000 - 20000	199 335 050	810,50	135	429	341	335	3 ½
3000 - 30000	199 335 051	810,50	135	429	341	335	3 ½
8000 - 60000	199 335 052	810,50	135	429	341	335	3 ½

variabele doorstroommeter type 350

variabele doorstroommeter type 350



doorstroommeter type 350
vlotter in PVDF met magneet
met lijmmof PVC-U, metrisch

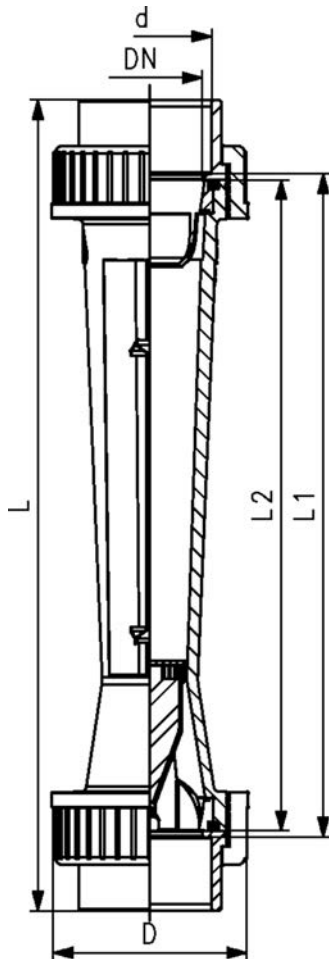
uitvoering:

- standaard geleidestang PVDF met RVS kern (V4A) voor DN50 en DN65

optioneel:

- 4-20 mA sensor
- grenswaardecontacten
- speciale schaalverdeling voor andere media
- wartelmoeren en verbindingsonderdelen in andere materialen op aanvraag

schaal (L/h)	d (mm)	afm. (inch)	DN (mm)	meetbuis van PVC- U O-ring EPDM Code	EUR gewicht (kg)	meetbuis van Polyamide, O-ring EPDM Code	EUR gewicht (kg)
50 - 500	32	1	25	199 350 100	289,30	199 350 120	361,90
100 - 1000	32	1	25	199 350 101	289,30	199 350 121	361,90
150 - 1500	40	1 1/4	32	199 350 102	342,40	199 350 122	416,50
250 - 2500	40	1 1/4	32	199 350 103	342,40	199 350 123	416,50
200 - 2000	50	1 1/2	40	199 350 104	407,60	199 350 124	508,40
300 - 3000	50	1 1/2	40	199 350 105	407,60	199 350 125	508,40
600 - 6000	50	1 1/2	40	199 350 106	407,60	199 350 126	508,40
600 - 6000	63	2	50	199 350 107	654,10	199 350 127	816,80
1000 - 10000	63	2	50	199 350 108	654,10	199 350 128	816,80
1500 - 15000	63	2	50	199 350 109	654,10	199 350 129	816,80
2000 - 20000	75	2 1/2	65	199 350 110	832,00	199 350 130	1.039,20
3000 - 30000	75	2 1/2	65	199 350 111	832,00	199 350 131	1.039,20
8000 - 60000	75	2 1/2	65	199 350 112	832,00	199 350 132	1.039,20



schaal (L/h)	meetbuis van Polysulfon, O-ring EPDM Code	EUR gewicht (kg)	D (mm)	L (mm)	L1 (mm)	L2 (mm)	G (inch)	
50 - 500	199 350 140	358,50	0,440	58	400	356	350	1 1/2
100 - 1000	199 350 141	358,50	0,440	58	400	356	350	1 1/2
150 - 1500	199 350 142	432,90	0,615	72	408	356	350	2
250 - 2500	199 350 143	432,90	0,620	72	408	356	350	2
200 - 2000	199 350 144	515,50	0,900	83	418	356	350	2 1/4
300 - 3000	199 350 145	515,50	0,900	83	418	356	350	2 1/4
600 - 6000	199 350 146	515,50	0,900	83	418	356	350	2 1/4
600 - 6000	199 350 147	878,00	1,320	101	432	356	350	2 3/4
1000 - 10000	199 350 148	878,00	1,320	101	432	356	350	2 3/4
1500 - 15000	199 350 149	878,00	1,320	101	432	356	350	2 3/4
2000 - 20000	199 350 150	1.016,10	2,150	135	444	356	350	3 1/2
3000 - 30000	199 350 151	1.016,10	2,150	135	444	356	350	3 1/2
8000 - 60000	199 350 152	1.016,10	2,150	135	444	356	350	3 1/2



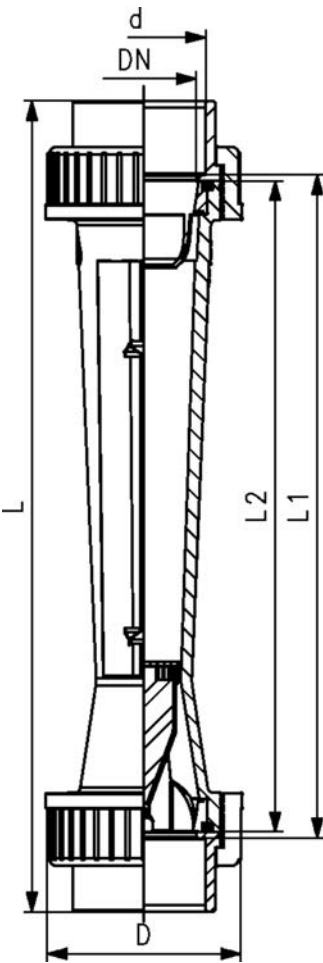
doorstroommeter type 350
vlotter in PVDF zonder magneet
met lijmmof PVC-U, metrisch

uitvoering:

- standaard geleidestang PVDF met RVS kern (V4A) voor DN50 en DN65

optioneel:

- speciale schaalverdeling voor andere media
- wartelmoeren en verbindingsonderdelen in andere materialen op aanvraag



schaal (L/h)	d (mm)	afm. (inch)	DN (mm)	meetbuis van PVC- U O-ring EPDM Code	EUR gewicht (kg)	meetbuis van Polyamide, O-ring EPDM Code	EUR gewicht (kg)
50 - 500	32	1	25	199 350 000	204,60	199 350 020	254,90
100 - 1000	32	1	25	199 350 001	204,60	199 350 021	254,90
150 - 1500	40	1 ¼	32	199 350 002	243,10	199 350 022	291,80
250 - 2500	40	1 ¼	32	199 350 003	243,10	199 350 023	291,80
200 - 2000	50	1 ½	40	199 350 004	275,90	199 350 024	343,60
300 - 3000	50	1 ½	40	199 350 005	275,90	199 350 025	343,60
600 - 6000	50	1 ½	40	199 350 006	275,90	199 350 026	343,60
600 - 6000	63	2	50	199 350 007	438,90	199 350 027	548,60
1000 - 10000	63	2	50	199 350 008	438,90	199 350 028	548,60
1500 - 15000	63	2	50	199 350 009	438,90	199 350 029	548,60
2000 - 20000	75	2 ½	65	199 350 010	689,50	199 350 030	861,40
3000 - 30000	75	2 ½	65	199 350 011	689,50	199 350 031	861,40
8000 - 60000	75	2 ½	65	199 350 012	689,50	199 350 032	861,40

schaal (L/h)	meetbuis van Polysulfon, O-ring EPDM Code	EUR gewicht (kg)	D (mm)	L (mm)	L1 (mm)	L2 (mm)	G (inch)
50 - 500	199 350 040	247,60	58	400	356	350	1 ½
100 - 1000	199 350 041	247,60	58	400	356	350	1 ½
150 - 1500	199 350 042	296,30	72	408	356	350	2
250 - 2500	199 350 043	296,30	72	408	356	350	2
200 - 2000	199 350 044	343,60	83	418	356	350	2 ¼
300 - 3000	199 350 045	343,60	83	418	356	350	2 ¼
600 - 6000	199 350 046	343,60	83	418	356	350	2 ¼
600 - 6000	199 350 047	537,10	101	432	356	350	2 ¾
1000 - 10000	199 350 048	537,10	101	432	356	350	2 ¾
1500 - 15000	199 350 049	537,10	101	432	356	350	2 ¾
2000 - 20000	199 350 050	834,80	135	444	356	350	3 ½
3000 - 30000	199 350 051	834,80	135	444	356	350	3 ½
8000 - 60000	199 350 052	834,80	135	444	356	350	3 ½

korte uitvoering

korte uitvoering



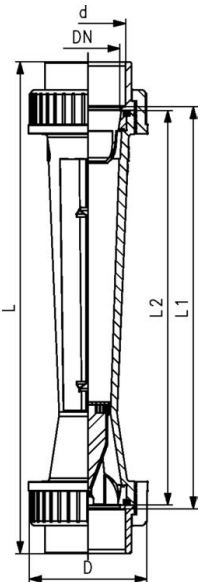
doorstroommeter korte versie type 123
vlotter in PVDF met magneet
met lijmmof PVC-U metrisch
O-ring EPDM

uitvoering:

- zie accessoires voor geschikte grenswaardecontacten
- wartelmoeren en inlegdelen in andere materialen op aanvraag

type	d (mm)	afm. (inch)	DN (mm)	schaal (l/h)	Polysulfon Code	EUR	gewicht (kg)
SK 500	16	3/8	10	2,5 - 25,0	198 801 890	298,00	0,079
SK 510	16	3/8	10	5,0 - 50,0	198 801 891	298,00	0,102
SK 520	16	3/8	10	10,0 - 100,0	198 801 892	298,00	0,075
SK 600	20	1/2	15	8,0 - 80,0	198 801 893	322,70	0,123
SK 610	20	1/2	15	15,0 - 150,0	198 801 894	322,70	0,121
SK 620	20	1/2	15	20,0 - 200,0	198 801 895	322,70	0,119
SK 700	32	1	25	15,0 - 150,0	198 801 896	416,40	0,248
SK 710	32	1	25	30,0 - 300,0	198 801 897	416,40	0,289
SK 720	32	1	25	50,0 - 500,0	198 801 898	416,40	0,241
SK 730	32	1	25	100,0 - 1000,0	198 801 899	416,40	0,280

type	PVC-U transparant Code	EUR gewicht (kg)	D (mm)	L (mm)	L1 (mm)	L2 (mm)	Rp (inch)	
SK 500	198 803 320	245,20	0,081	35	199	171	165	3/8
SK 510	198 803 321	245,20	0,080	35	199	171	165	3/8
SK 520	198 803 322	245,20	0,079	35	199	171	165	3/8
SK 600	198 803 323	262,00	0,129	43	223	191	185	1/2
SK 610	198 803 324	262,00	0,160	43	223	191	185	1/2
SK 620	198 803 325	262,00	0,125	43	223	191	185	1/2
SK 700	198 803 326	306,10	0,301	60	250	206	200	1
SK 710	198 803 327	306,10	0,255	60	250	206	200	1
SK 720	198 803 328	306,10	0,248	60	250	206	200	1
SK 730	198 803 329	306,10	0,242	60	250	206	200	1



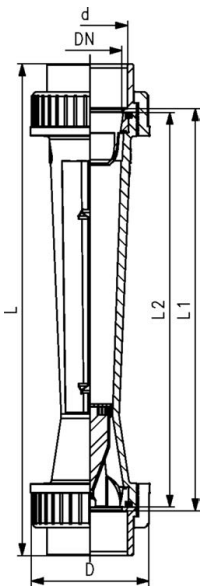


doorstroommeter korte versie type 123
vlotter in PVDF zonder magneet
met lijmmof PVC-U metrisch
O-ring EPDM

uitvoering:

- wartelmoeren en inlegdelen in andere materialen op aanvraag

type	d (mm)	afm. (inch)	DN (mm)	schaal (l/h)	Polysulfon Code	EUR	gewicht (kg)
SK 50	16	3/8	10	2,5 - 25,0	198 801 880	188,40	0,083
SK 51	16	3/8	10	5,0 - 50,0	198 801 881	188,40	0,078
SK 52	16	3/8	10	10,0 - 100,0	198 801 882	188,40	0,079
SK 60	20	1/2	15	8,0 - 80,0	198 801 883	202,60	0,125
SK 61	20	1/2	15	15,0 - 150,0	198 801 884	202,60	0,122
SK 62	20	1/2	15	20,0 - 200,0	198 801 885	202,60	0,119
SK 70	32	1	25	15,0 - 150,0	198 801 886	233,60	0,247
SK 71	32	1	25	30,0 - 300,0	198 801 887	233,60	0,244
SK 72	32	1	25	50,0 - 500,0	198 801 888	233,60	0,285
SK 73	32	1	25	100,0 - 1000,0	198 801 889	233,60	0,234



type	PVC-U transparant Code	EUR	gewicht (kg)	D (mm)	L (mm)	L1 (mm)	L2 (mm)	Rp (inch)
SK 50	198 803 310	148,90	0,081	35	199	171	165	3/8
SK 51	198 803 311	148,90	0,079	35	199	171	165	3/8
SK 52	198 803 312	148,90	0,079	35	199	171	165	3/8
SK 60	198 803 313	159,90	0,127	43	223	191	185	1/2
SK 61	198 803 314	159,90	0,130	43	223	191	185	1/2
SK 62	198 803 315	159,90	0,125	43	223	191	185	1/2
SK 70	198 803 316	187,80	0,256	60	250	206	200	1
SK 71	198 803 317	187,80	0,254	60	250	206	200	1
SK 72	198 803 318	187,80	0,244	60	250	206	200	1
SK 73	198 803 319	187,80	0,242	60	250	206	200	1

speciale uitvoering PVDF-HP

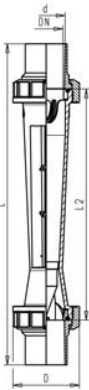
speciale uitvoering PVDF-HP



speciale uitvoering type 335 PVDF-HP
vlotter in PTFE zonder magneet
met laseind BCF/IR
O-ring FKM

type	d (mm)	DN (mm)	afm. (inch)	schaal (l/h)	schaal (gal/min)	Polysulfon Code	EUR	gewicht (kg)
SK 70	32	25	1	68 - 204	0,3 - 0,9	198 807 209	651,70	0,383
SK 71	32	25	1	90 - 295	0,4 - 1,3	198 807 210	651,70	0,387
SK 73	32	25	1	136 - 795	0,6 - 3,5	198 807 202	651,70	0,401

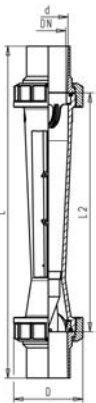
type	D (mm)	L (mm)	L2 (mm)	Rp (inch)
SK 70	60	318	200	1
SK 71	60	318	200	1
SK 73	60	318	200	1





**speciale uitvoering type 335 PVDF-HP
vlotter in PVDF (wit) zonder magneet
met laseind BCF/IR
O-ring FKM (wit)**

d (mm)	DN (mm)	afm. (inch)	schaal (l/h)	schaal (gal/min)	Polysulfon Code	EUR	gewicht (kg)
32	25	1	100 - 1000	0,4 - 4,4	198 335 160	811,60	0,401
50	40	1 ½	300 - 3000	1,3 - 13,2	198 335 161	1.262,40	1,030
50	40	1 ½	600 - 6000	2,6 - 26,4	198 335 162	1.262,40	0,978
63	50	2	1000 - 8000	4,4 - 35,2	198 335 163	1.713,60	1,500
63	50	2	1500 - 15000	6,6 - 66,0	198 335 164	1.731,20	1,500
75	65	2 ½	2000 - 20000	8,8 - 88,0	198 335 165	2.507,50	2,500
75	65	2 ½	3000 - 29000	13,2 - 127,7	198 335 166	2.539,60	2,500



d (mm)	D (mm)	L (mm)	L2 (mm)	G (inch)
32	60	453	335	1 ½
50	83	466	335	2 ¼
50	83	466	335	2 ¼
63	103	472	335	2 ¾
63	103	472	335	2 ¾
75	122	495	335	3 ½
75	122	495	335	3 ½

speciale uitvoering PVDF

speciale uitvoering PVDF

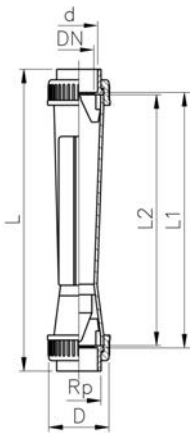


speciale uitvoering PVDF

vlotter in PVDF (rood) zonder magneet - met lasmof, metrisch

afmetingen L en L1 gelden alleen voor mofverbinding
afmeting L2 is de buislangte

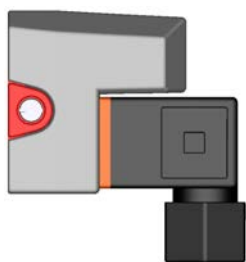
type	d (mm)	DN (mm)	schaal (l/h)	meetbuis van PVDF O- ring uit FKM lasmof Code	EUR	gewicht (kg)
SK 10	32	25	50 - 500	198 806 466	766,70	0,571
SK 11	32	25	100 - 1000	198 806 467	766,70	0,520
SK 20	50	40	200 - 2000	198 806 468	1.126,40	1,259
SK 21	50	40	300 - 3000	198 806 469	1.364,90	1,247
SK 30	63	50	600 - 6000	198 806 470	1.630,50	1,698
SK 31	63	50	1200 - 12000	198 806 471	1.630,50	1,587
SK 40	75	65	2000 - 20000		o.a.	2,900
SK 41	75	65	3000 - 30000		o.a.	2,900



type	meetbuis van PVDF O- ring uit FKM IR/laseind Code	EUR	gewicht (kg)	D (mm)	L (mm)	L (IR-SS) (mm)	L1 (mm)	L2 (mm)	Rp (inch)
SK 10	198 803 905	790,40	0,520	60	385	443	341	335	1
SK 11	198 803 906	790,40	0,520	60	385	443	341	335	1
SK 20	198 803 907	1.159,50	1,220	83	403	459	341	335	1 ½
SK 21	198 803 908	1.159,50	1,220	83	403	459	341	335	1 ½
SK 30	198 803 909	1.680,20	1,785	103	417	461	339	335	2
SK 31	198 803 910	1.680,20	1,680	103	417	461	339	335	2
SK 40	198 803 911	2.122,70	2,900	122	429	453	341	335	2 ½
SK 41	198 803 912	2.572,50	2,900	122	429	453	341	335	2 ½

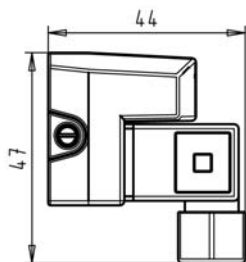
toebehoren

toebehoren

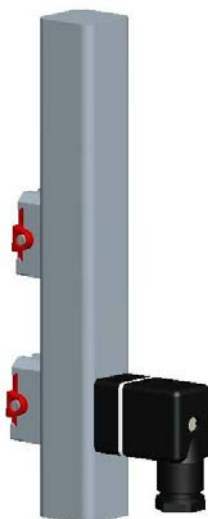


accessoires
grenswaardecontact GK10/GK11
 voor type 335/350 en de korte uitvoeringen

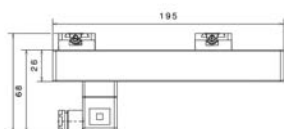
type	Code	EUR	gewicht (kg)
GK10 (min.)	198 335 998	110,90	0,035
GK11 (max.)	198 335 999	110,90	0,034



toebehoren
4-20 mA sensor
 voor type 335 en type 350

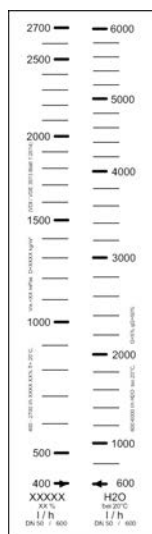


type	d (mm)	DN (mm)	waterbereik (l/h)	Code	EUR	gewicht (kg)
GK 15	32	25	50-500	198 335 962	780,20	0,150
GK 15	32	25	100-1000	198 335 963	945,60	0,150
GK 15	40	32	150-1500	198 335 964	780,20	0,150
GK 15	40	32	250-2500	198 335 965	780,20	0,150
GK 15	50	40	200-2000	198 335 966	757,50	0,150
GK 15	50	40	300-3000	198 335 967	780,20	0,150
GK 15	50	40	600-6000	198 335 968	780,20	0,150
GK 15	63	50	600-6000	198 335 969	945,60	0,150
GK 15	63	50	1000-10000	198 335 991	780,20	0,150
GK 15	63	50	1500-15000	198 335 992	945,60	0,120
GK 15	75	65	2000-20000	198 335 993	780,20	0,150
GK 15	75	65	3000-30000	198 335 994	780,20	0,150
GK 15	75	65	8000-60000	198 335 995	780,20	0,150



speciale uitvoering voor type 335/350

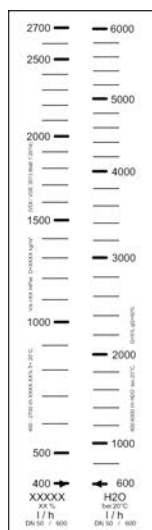
speciale uitvoering voor type 335/350



speciale schaalverdeling voor type 335/350 - % voor water

d (mm)	DN (mm)	afm. (inch)	schaal (l/h)	waterbereik (l/h)	Code	EUR	gewicht (kg)
32	25	1	10-100 %	50-500	199 335 084	23,80	0,050
32	25	1	10-100 %	100-1000	199 335 083	23,80	0,003
40	32	1 ¼	10-100 %	150-1500	199 335 069	23,80	0,050
40	32	1 ¼	10-100 %	250-2500	199 335 068	23,80	0,050
50	40	1 ½	10-100 %	200-2000	199 335 054	23,80	0,050
50	40	1 ½	10-100 %	300-3000	199 335 053	23,80	0,002
50	40	1 ½	10-100 %	600-6000	199 335 039	23,80	0,050
63	50	2	10-100 %	600-6000	199 335 038	23,80	0,002
63	50	2	10-100 %	1000-10000	199 335 037	23,80	0,002
63	50	2	10-100 %	1500-15000	199 335 036	23,80	0,050
75	65	2 ½	10-100 %	2000-20000	199 335 035	23,80	0,050
75	65	2 ½	10-100 %	3000-30000	199 335 034	23,80	0,050
75	65	2 ½	13.3-100 %	8000-60000	199 335 033	23,80	0,050

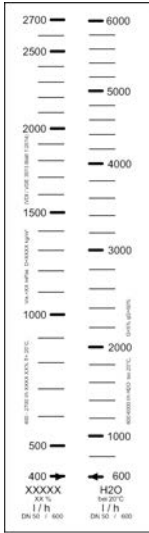
Example of special scale



speciale schaalverdeling voor type 335/350 m³/h

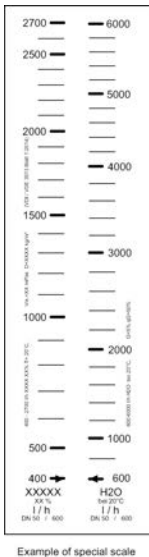
d (mm)	DN (mm)	afm. (inch)	schaal (m ³ /h)	waterbereik (l/h)	Code	EUR	gewicht (kg)
32	25	1	0,05 - 0,50	50 - 500	199 335 655	23,80	0,050
32	25	1	0,10 - 1,00	100 - 1000	199 335 656	23,80	0,050
40	32	1 ¼	0,15 - 1,50	150 - 1500	199 335 657	23,80	0,050
40	32	1 ¼	0,25 - 2,50	250 - 2500	199 335 658	23,80	0,050
50	40	1 ½	0,20 - 2,00	200 - 2000	199 335 659	23,80	0,050
50	40	1 ½	0,30 - 3,00	300 - 3000	199 335 660	23,80	0,050
50	40	1 ½	0,60 - 6,00	600 - 6000	199 335 661	23,80	0,050
63	50	2	0,60 - 6,00	600 - 6000	199 335 662	23,80	0,050
63	50	2	1,00 - 10,00	1000 - 10000	199 335 663	23,80	0,050
63	50	2	1,50 - 15,00	1500 - 15000	199 335 664	23,80	0,050
75	65	2 ½	2,00 - 20,00	2000 - 20000	199 335 665	23,80	0,050
75	65	2 ½	3,00 - 30,00	3000 - 30000	199 335 666	23,80	0,008
75	65	2 ½	8,00 - 60,00	8000 - 60000	199 335 667	23,80	0,050

Example of special scale



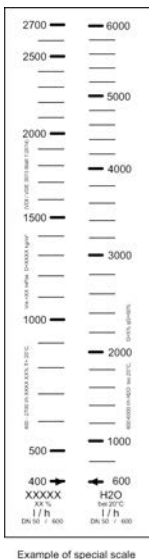
speciale schaalverdeling voor type 335/350 Imp. GPM

d (mm)	DN (mm)	afm. (inch)	schaal (gal/min)	waterbereik (l/h)	Code	EUR	gewicht (kg)
32	25	1	0,183 - 1,830	50-500	199 335 670	23,80	0,050
32	25	1	0,366 - 3,660	100-1000	199 335 671	23,80	0,050
40	32	1 ¼	0,550 - 5,500	150-1500	199 335 672	23,80	0,050
40	32	1 ¼	0,916 - 9,160	250-2500	199 335 673	23,80	0,050
50	40	1 ½	0,733 - 7,330	200-2000	199 335 674	23,80	0,050
50	40	1 ½	1,090 - 10,900	300-3000	199 335 675	23,80	0,050
50	40	1 ½	2,190 - 21,900	600-6000	199 335 676	23,80	0,050
63	50	2	2,200 - 22,000	600-6000	199 335 677	23,80	0,050
63	50	2	3,660 - 36,600	1000-10000	199 335 678	23,80	0,050
63	50	2	5,490 - 54,900	1500-15000	199 335 679	23,80	0,050
75	65	2 ½	7,320 - 73,200	2000-20000	199 335 680	23,80	0,050
75	65	2 ½	10,980 - 109,800	3000-30000	199 335 681	23,80	0,050
75	65	2 ½	29,280 - 219,600	8000-60000	199 335 682	23,80	0,050



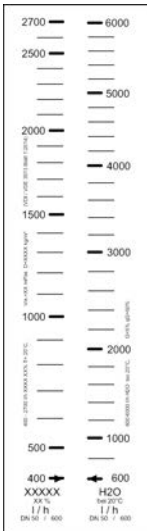
speciale schaalverdeling voor type 335/350 US GPM

d (mm)	DN (mm)	afm. (inch)	schaal (gal/min)	waterbereik (l/h)	Code	EUR	gewicht (kg)
32	25	1	0,22 - 2,20	50 - 500	199 335 685	23,80	0,050
32	25	1	0,44 - 4,40	100 - 1000	199 335 686	23,80	0,050
40	32	1 ¼	0,66 - 6,60	150 - 1500	199 335 687	23,80	0,002
40	32	1 ¼	1,10 - 11,00	250 - 2500	199 335 688	23,80	0,050
50	40	1 ½	0,88 - 8,80	200 - 2000	199 335 689	23,80	0,002
50	40	1 ½	1,32 - 13,20	300 - 3000	199 335 690	23,80	0,050
50	40	1 ½	2,64 - 26,40	600 - 6000	199 335 691	23,80	0,002
63	50	2	2,64 - 26,40	600 - 6000	199 335 692	23,80	0,050
63	50	2	4,40 - 44,02	1000 - 10000	199 335 693	23,80	0,002
63	50	2	6,60 - 66,04	1500 - 15000	199 335 694	23,80	0,050
75	65	2 ½	8,80 - 88,00	2000 - 20000	199 335 695	23,80	0,002
75	65	2 ½	13,20 - 132,00	3000 - 30000	199 335 696	23,80	0,002
75	65	2 ½	35,20 - 264,00	8000 - 60000	199 335 697	23,80	0,050



speciale schaalverdeling voor type 335/350 - l/h water

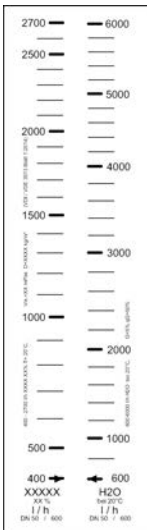
d (mm)	DN (mm)	afm. (inch)	schaal (l/h)	Code	EUR	gewicht (kg)
32	25	1	50 - 500	199 335 861	23,80	0,050
32	25	1	100 - 1000	199 335 862	23,80	0,050
40	32	1 ¼	150 - 1500	199 335 863	23,80	0,050
40	32	1 ¼	250 - 2500	199 335 864	23,80	0,050
50	40	1 ½	200 - 2000	199 335 865	23,80	0,050
50	40	1 ½	600 - 6000	199 335 867	23,80	0,050
50	40	1 ½	300 - 3000	199 335 866	23,80	0,050
63	50	2	600 - 6000	199 335 868	23,80	0,050
63	50	2	1000 - 10000	199 335 869	23,80	0,050
63	50	2	1500 - 15000	199 335 870	23,80	0,050
75	65	2 ½	2000 - 20000	199 335 871	23,80	0,050
75	65	2 ½	3000 - 30000	199 335 872	23,80	0,050
75	65	2 ½	8000 - 60000	199 335 873	23,80	0,050



Example of special scale

speciale schaalverdeling voor type 335/350 lucht / 0 bar / N m3/h

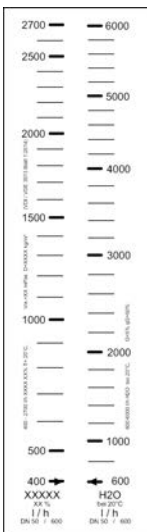
d (mm)	DN (mm)	afm. (inch)	schaal (m³/h)	waterbereik (L/h)	Code	EUR	gewicht (kg)
32	25	1	2,0 - 15,0	50 - 500	199 350 655	23,80	0,002
32	25	1	3,5 - 30,0	100 - 1000	199 350 656	23,80	0,050
40	32	1 ¼	5,0 - 45,0	150 - 1500	199 350 657	23,80	0,050
40	32	1 ¼	8,0 - 76,0	250 - 2500	199 350 658	23,80	0,050
50	40	1 ½	7,0 - 60,0	200 - 2000	199 350 659	23,80	0,050
50	40	1 ½	10,0 - 87,0	300 - 3000	199 350 660	23,80	0,002
50	40	1 ½	20,0 - 170,0	600 - 6000	199 350 661	23,80	0,050
63	50	2	25,0 - 180,0	600 - 6000	199 350 662	23,80	0,050
63	50	2	30,0 - 280,0	1000 - 10000	199 350 663	23,80	0,050
63	50	2	50,0 - 440,0	1500 - 15000	199 350 664	23,80	0,050
75	65	2 ½	70,0 - 580,0	2000 - 20000	199 350 665	23,80	0,050
75	65	2 ½	100,0 - 900,0	3000 - 30000	199 350 666	23,80	0,050
75	65	2 ½	230,0 - 1650,0	8000 - 60000	199 350 667	23,80	0,050



Example of special scale

speciale schaalverdeling voor type 335/350 HCl 30-33% l/h

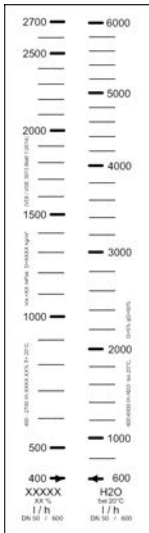
d (mm)	DN (mm)	afm. (inch)	schaal (l/h)	waterbereik (l/h)	Code	EUR	gewicht (kg)
32	25	1	40 - 430	50-500	199 350 670	23,80	0,050
32	25	1	80 - 860	100-1000	199 350 671	23,80	0,002
40	32	1 ¼	150 - 1250	150-1500	199 350 672	23,80	0,050
40	32	1 ¼	200 - 2150	250-2500	199 350 673	23,80	0,050
50	40	1 ½	200 - 1850	200-2000	199 350 674	23,80	0,050
50	40	1 ½	300 - 2500	300-3000	199 350 675	23,80	0,050
50	40	1 ½	600 - 4900	600-6000	199 350 676	23,80	0,010
63	50	2	600 - 5400	600-6000	199 350 677	23,80	0,050
63	50	2	800 - 8400	1000-10000	199 350 678	23,80	0,050
63	50	2	1000 - 12750	1500-15000	199 350 679	23,80	0,050
75	65	2 ½	2000 - 17500	2000-20000	199 350 680	23,80	0,050
75	65	2 ½	3000 - 26500	3000-30000	199 350 681	23,80	0,050
75	65	2 ½	6000 - 50000	8000-60000	199 350 682	23,80	0,050



Example of special scale

speciale schaalverdeling voor type 335/350 NaOH 30% l/h

d (mm)	DN (mm)	afm. (inch)	schaal (l/h)	waterbereik (l/h)	Code	EUR	gewicht (kg)
32	25	1	30 - 320	50-500	199 350 685	23,80	0,050
32	25	1	70 - 660	100-1000	199 350 686	23,80	0,050
40	32	1 ¼	100 - 900	150-1500	199 350 687	23,80	0,050
40	32	1 ¼	100 - 1600	250-2500	199 350 688	23,80	0,050
50	40	1 ½	200 - 1400	200-2000	199 350 689	23,80	0,002
50	40	1 ½	300 - 1950	300-3000	199 350 690	23,80	0,050
50	40	1 ½	500 - 3800	600-6000	199 350 691	23,80	0,050
63	50	2	500 - 4300	600-6000	199 350 692	23,80	0,050
63	50	2	600 - 6600	1000-10000	199 350 693	23,80	0,050
63	50	2	750 - 9500	1500-15000	199 350 694	23,80	0,050
75	65	2 ½	1300 - 13000	2000-20000	199 350 695	23,80	0,050
75	65	2 ½	2600 - 20000	3000-30000	199 350 696	23,80	0,050
75	65	2 ½	6000 - 40000	8000-60000	199 350 697	23,80	0,050



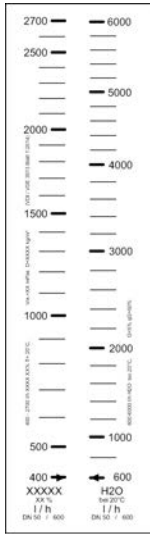
Example of special scale

speciale schaalverdeling voor type 335/350 NaOH 50% l/h

d	DN	afm.	schaal	waterbereik	Code	EUR	gewicht
(mm)	(mm)	(inch)	(l/h)	(l/h)			(kg)
32	25	1	10 - 62	50-500	199 350 755	23,80	0,050
32	25	1	10 - 195	100-1000	199 350 756	23,80	0,050
40	32	1 ¼	20 - 350	150-1500	199 350 757	23,80	0,050
40	32	1 ¼	5 - 760	250-2500	199 350 758	23,80	0,050
50	40	1 ½	5 - 540	200-2000	199 350 759	23,80	0,050
50	40	1 ½	105 - 1200	300-3000	199 350 760	23,80	0,050
50	40	1 ½	400 - 2350	600-6000	199 350 761	23,80	0,002
63	50	2	100 - 2200	600-6000	199 350 762	23,80	0,050
63	50	2	100 - 4000	1000-10000	199 350 763	23,80	0,050
63	50	2	300 - 5000	1500-15000	199 350 764	23,80	0,050
75	65	2 ½	200 - 7000	2000-20000	199 350 765	23,80	0,050
75	65	2 ½	400 - 9800	3000-30000	199 350 766	23,80	0,050
75	65	2 ½	2000 - 15000	8000-60000	199 350 767	23,80	0,050

speciale schaalverdeling voor korte uitvoering

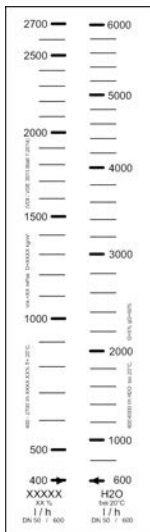
speciale schaalverdeling voor korte uitvoering



Example of special scale

speciale schaalverdeling voor korte uitvoering water l/h

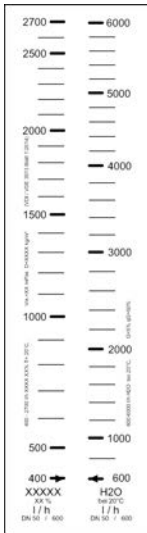
d (mm)	DN (mm)	afm. (inch)	type	schaal (l/h)	Code	EUR
16	10	3/8	SK 50 / 500	2,5 - 25,0	198 801 386	12,30
16	10	3/8	SK 51 / 510	5,0 - 50,0	198 801 387	12,30
16	10	3/8	SK 52 / 520	10,0 - 100,0	198 801 388	12,30
20	15	1/2	SK 60 / 600	8,0 - 80,0	198 801 389	12,30
20	15	1/2	SK 61 / 610	15,0 - 150,0	198 801 390	12,30
20	15	1/2	SK 62 / 620	20,0 - 200,0	198 801 391	12,30
32	25	1	SK 70 / 700	15,0 - 150,0	198 801 392	12,30
32	25	1	SK 71 / 710	30,0 - 300,0	198 801 393	12,30
32	25	1	SK 72 / 720	50,0 - 500,0	198 801 394	12,30
32	25	1	SK 73 / 730	100,0 - 1000,0	198 801 395	12,30



Example of special scale

speciale schaalverdeling voor korte uitvoering US GPM

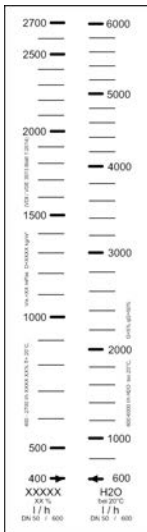
d (mm)	DN (mm)	afm. (inch)	type	schaal (gal/min)	Code	EUR
16	10	3/8	SK 50 / 500	0,01 - 0,11	198 801 961	12,30
16	10	3/8	SK 51 / 510	0,02 - 0,22	198 801 962	12,30
16	10	3/8	SK 52 / 520	0,04 - 0,44	198 801 963	12,30
20	15	1/2	SK 60 / 600	0,03 - 0,35	198 801 964	12,30
20	15	1/2	SK 61 / 610	0,06 - 0,66	198 801 965	12,30
20	15	1/2	SK 62 / 620	0,08 - 0,88	198 801 966	12,30
32	25	1	SK 70 / 700	0,06 - 0,66	198 801 967	12,30
32	25	1	SK 71 / 710	0,13 - 1,32	198 801 968	12,30
32	25	1	SK 72 / 720	0,22 - 2,20	198 801 969	12,30
32	25	1	SK 73 / 730	0,44 - 4,40	198 801 970	12,30



Example of special scale

speciale schaalverdeling voor korte uitvoering lucht / 0 bar / m³/h

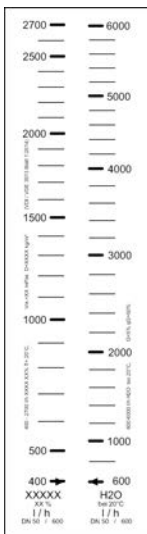
d (mm)	DN (mm)	afm. (inch)	type	schaal (m ³ /h)	Code	EUR
16	10	3/8	SK 50 / 500	0,50 - 0,95	198 801 308	40,30
16	10	3/8	SK 51 / 510	0,50 - 1,90	198 801 309	40,30
16	10	3/8	SK 52 / 520	0,80 - 3,00	198 801 310	40,30
20	15	1/2	SK 60 / 600	0,60 - 2,80	198 801 311	40,30
20	15	1/2	SK 61 / 610	1,40 - 5,60	198 801 312	40,30
20	15	1/2	SK 62 / 620	1,50 - 7,00	198 801 313	40,30
32	25	1	SK 70 / 700	1,00 - 6,50	198 801 314	40,30
32	25	1	SK 71 / 710	1,50 - 11,00	198 801 315	40,30
32	25	1	SK 72 / 720	3,00 - 18,00	198 801 316	40,30
32	25	1	SK 73 / 730	6,00 - 30,00	198 801 317	40,30



Example of special scale

speciale schaalverdeling voor korte uitvoering HCl 30 - 33% l/h

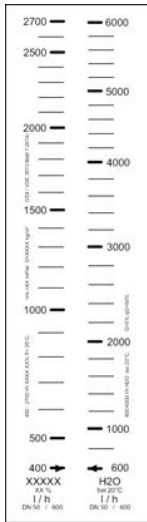
d (mm)	DN (mm)	afm. (inch)	type	schaal (L/h)	Code	EUR
16	10	3/8	SK 50 / 500	2,5 - 20,0	198 806 511	40,30
16	10	3/8	SK 51 / 510	5,0 - 40,0	198 806 512	40,30
16	10	3/8	SK 52 / 520	10,0 - 85,0	198 806 513	40,30
20	15	1/2	SK 60 / 600	8,0 - 70,0	198 806 514	40,30
20	15	1/2	SK 61 / 610	15,0 - 125,0	198 806 515	40,30
20	15	1/2	SK 62 / 620	20,0 - 170,0	198 806 516	40,30
32	20	1	SK 71 / 710	30,0 - 260,0	198 806 518	40,30
32	20	1	SK 70 / 700	5,0 - 125,0	198 806 517	39,30
32	20	1	SK 72 / 720	50,0 - 425,0	198 806 519	40,30
32	20	1	SK 73 / 730	100,0 - 850,0	198 806 520	40,30



Example of special scale

speciale schaalverdeling voor korte uitvoering NaOH 30% l/h

d (mm)	DN (mm)	afm. (inch)	type	schaal (L/h)	Code	EUR
16	10	3/8	SK 50 / 500	0,2 - 5,0	198 806 521	40,30
16	10	3/8	SK 51 / 510	1,0 - 14,0	198 806 522	40,30
16	10	3/8	SK 52 / 520	3,0 - 35,0	198 806 523	40,30
20	15	1/2	SK 60 / 600	2,0 - 23,0	198 806 524	40,30
20	15	1/2	SK 61 / 610	3,0 - 55,0	198 806 525	40,30
20	15	1/2	SK 62 / 620	5,0 - 80,0	198 806 526	40,30
32	25	1	SK 70 / 700	3,0 - 55,0	198 806 527	40,30
32	25	1	SK 71 / 710	6,0 - 130,0	198 806 528	40,30
32	25	1	SK 72 / 720	10,0 - 250,0	198 806 529	40,30
32	25	1	SK 73 / 730	40,0 - 590,0	198 806 530	40,30



speciale schaalverdeling voor korte uitvoering NaOH 50% l/h

d (mm)	DN (mm)	afm. (inch)	type	schaal (l/h)	Code	EUR
20	15	½	SK 60 / 600	0,2 - 3,5	198 806 531	40,30
20	15	½	SK 61 / 610	0,5 - 10,0	198 806 532	40,30
20	15	½	SK 62 / 620	0,5 - 16,0	198 806 533	40,30
32	25	1	SK 70 / 700	0,5 - 11,0	198 806 534	40,30
32	25	1	SK 71 / 710	1,0 - 33,0	198 806 535	40,30
32	25	1	SK 72 / 720	2,0 - 80,0	198 806 536	40,30
32	25	1	SK 73 / 730	10,0 - 220,0	198 806 537	40,30

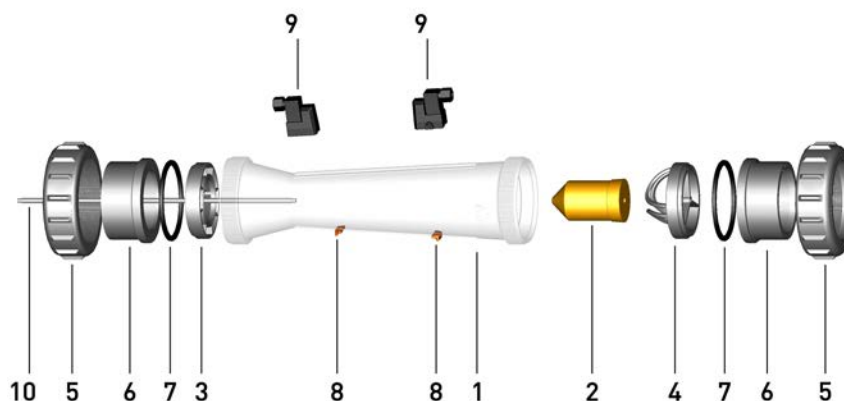
vervangingsonderdeel voor variabele doorstroommeter SK10-SK41/SK100-SK410 standaard vlotter in PTFE zonder magneet

type	d (mm)	afm. (inch)	DN (mm)	Code	EUR	gewicht (kg)
SK 20	50	1 ½	40	198 807 167	317,10	0,096
SK 21	50	1 ½	40	198 807 171	317,10	0,270
SK 30	63	2	50	198 807 168	408,30	0,170
SK 31	63	2	50	198 807 172	408,30	0,450
SK40	75	2 ½	65	198 807 169	491,00	0,179
SK 41	75	2 ½	65	198 807 170	491,00	0,171

vervangingsonderdelen

vervangingsonderdelen doorstroommeters

variabele doorstroommeter type 350



doorstroommeter type 350
meetbuis met waterschaalverdeling (1)

d (mm)	afm. (inch)	DN (mm)	meetbereik (l/min)	PVC-U transparant Code	EUR	Polyamide Code	EUR
32	1	25	50 - 500	198 350 055	o.a.	198 350 070	o.a.
32	1	25	100 - 1000	198 350 056	o.a.	198 350 071	o.a.
40	1 ¼	32	150 - 1500	198 350 057	o.a.	198 350 072	o.a.
40	1 ¼	32	250 - 2500	198 350 058	o.a.	198 350 073	o.a.
50	1 ½	40	200 - 2000	198 350 059	o.a.	198 350 074	o.a.
50	1 ½	40	300 - 3000	198 350 060	o.a.	198 350 075	o.a.
50	1 ½	40	600 - 6000	198 350 061	o.a.	198 350 076	o.a.
63	2	50	600 - 6000	198 350 062	o.a.	198 350 077	o.a.
63	2	50	1000 - 10000	198 350 063	o.a.	198 350 078	o.a.
63	2	50	1500 - 15000	198 350 064	o.a.	198 350 079	o.a.
75	2 ½	65	2000 - 20000	198 350 065	o.a.	198 350 080	o.a.
75	2 ½	65	3000 - 30000	198 350 066	241,10	198 350 081	o.a.
75	2 ½	65	8000 - 60000	198 350 067	o.a.	198 350 082	o.a.

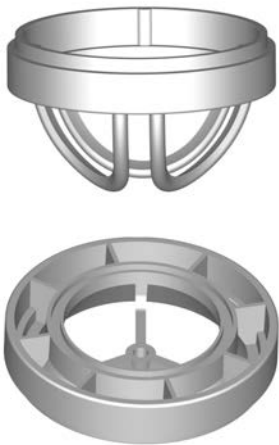
d (mm)	Polysulfon Code	EUR
32	198 350 085	o.a.
32	198 350 086	o.a.
40	198 350 087	o.a.
40	198 350 088	o.a.
50	198 350 089	o.a.
50	198 350 090	165,60
50	198 350 091	o.a.
63	198 350 092	o.a.
63	198 350 093	189,20
63	198 350 094	252,00
75	198 350 095	o.a.
75	198 350 096	o.a.
75	198 350 097	o.a.



doorstroommeter type 350
meetbuis zonder schaalverdeling (1)

d (mm)	afm. (inch)	DN (mm)	schaal (l/h)	PVC-U transparant Code	EUR	Polyamide Code	EUR
32	1	25	50 - 500	199 350 255	87,10	199 350 270	96,90
32	1	25	100 - 1000	199 350 256	87,10	199 350 271	96,90
40	1 ¼	32	150 - 1500	199 350 257	100,00	199 350 272	110,60
40	1 ¼	32	250 - 2500	199 350 258	100,00	199 350 273	110,60
50	1 ½	40	200 - 2000	199 350 259	109,00	199 350 274	121,80
50	1 ½	40	300 - 3000	199 350 260	109,00	199 350 275	121,80
50	1 ½	40	600 - 6000	199 350 261	109,00	199 350 276	121,80
63	2	50	600 - 6000	199 350 262	148,40	199 350 277	204,10
63	2	50	1000 - 10000	199 350 263	148,40	199 350 278	204,10
63	2	50	1500 - 15000	199 350 264	148,40	199 350 279	204,10
75	2 ½	65	2000 - 20000	199 350 265	301,10	199 350 280	396,90
75	2 ½	65	3000 - 30000	199 350 266	301,10	199 350 281	396,90
75	2 ½	65	8000 - 60000	199 350 267	301,10	199 350 282	396,90

d (mm)	Polysulfon Code	EUR
32	199 350 285	131,70
32	199 350 286	131,70
40	199 350 287	151,10
40	199 350 288	151,10
50	199 350 289	165,60
50	199 350 290	165,60
50	199 350 291	165,60
63	199 350 292	252,00
63	199 350 293	252,00
63	199 350 294	252,00
75	199 350 295	490,50
75	199 350 296	490,50
75	199 350 297	490,50



inzet PVDF (3, 4)

d (mm)	afm. (inch)	DN (mm)	schaal (l/h)	boven (4) Code	EUR	onder (3) Code	EUR
32	1	25	50 - 500	198 335 970	22,70	198 335 977	22,70
32	1	25	100 - 1000	198 335 970	22,70	198 335 977	22,70
40	1 ¼	32	150 - 1500	198 335 971	26,80	198 335 978	26,80
40	1 ¼	32	250 - 2500	198 335 971	26,80	198 335 978	26,80
50	1 ½	40	200 - 2000	198 335 972	29,80	198 335 979	29,80
50	1 ½	40	300 - 3000	198 335 972	29,80	198 335 979	29,80
50	1 ½	40	600 - 6000	198 335 972	29,80	198 335 979	29,80
63	2	50	600 - 6000	198 335 973	43,30	198 335 980	43,30
63	2	50	1000 - 10000	198 335 973	43,30	198 335 980	43,30
63	2	50	1500 - 15000	198 335 974	43,30		
75	2 ½	65	2000 - 20000	198 335 975	44,00		
75	2 ½	65	3000 - 30000	198 335 975	44,00		
75	2 ½	65	8000 - 60000	198 335 975	44,00		



geleidestang (10)

uitvoering:

- alleen voor DN50 (1.500 - 15.000 l/h) en DN65 (alle meetbereiken)

d (mm)	afm. (inch)	DN (mm)	schaal (l/h)	meetbereik (l/min)	Peek Code	EUR	RVS Code	EUR
63	2	50	1500 - 15000		198 350 980	71,10	198 350 098	87,00
75	2 ½	65	2000 - 20000		198 350 980	71,10	198 350 098	87,00
75	2 ½	65	3000 - 30000		198 350 980	71,10	198 350 098	87,00
75	2 ½	65	8000 - 60000		198 350 980	71,10	198 350 098	87,00

d (mm)	PVDF Code	EUR
63	198 350 981	139,20
75	198 350 981	139,20
75	198 350 981	139,20
75	198 350 981	139,20

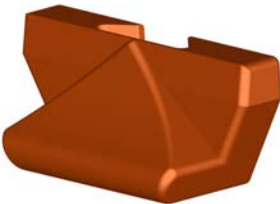


inzet voor geleidestang PVDF (voor 10)

uitvoering:

- alleen voor DN50 (1.500 - 15.000 l/h) en DN65 (alle meetbereiken)

d (mm)	afm. (inch)	DN (mm)	schaal (l/h)	voor Peek en RVS Code	EUR	voor PVDF/ RVS Code	EUR
63	2	50	1500 - 15000		o.a.	198 335 953	41,60
75	2 ½	65	2000 - 20000	198 335 987	47,20	198 335 954	46,10
75	2 ½	65	3000 - 30000	198 335 987	47,20	198 335 954	46,10
75	2 ½	65	8000 - 60000	198 335 987	47,20	198 335 954	46,10



doorstroommeter type 350 inchwaarde-indicatie (8)

uitvoering:

- voor alle afmetingen type 335/350

d (mm)	afm. (inch)	DN (mm)	inchwaarde-indicatie Code	EUR
32	1	25	198 335 990	2,20
40	1 ¼	32	198 335 990	2,20
50	1 ½	40	198 335 990	2,20
63	2	50	198 335 990	2,20
75	2 ½	65	198 335 990	2,20



doorstroommeter type 350 O-ringen (7)

d (mm)	afm. (inch)	DN (mm)	EPDM Code	EUR	FKM Code	EUR
32	1	25	748 410 008	5,80	749 410 008	11,00
40	1 ¼	32	748 410 009	5,80	749 410 009	18,70
50	1 ½	40	748 410 010	5,80	749 410 010	20,10
63	2	50	748 410 011	6,10	749 410 011	23,30
75	2 ½	65	748 410 014	8,00	749 410 014	36,70



doorstroommeter type 350 wartelmoer (5)

wartelmoer niet geschikt voor speciale versie met meetbuis in PVDF

d (mm)	afm. (inch)	DN (mm)	PVC-U Code	EUR	PVC-C Code	EUR	ABS Code	EUR
32	1	25	721 890 008	7,20	723 690 008	12,00	729 690 408	6,60
40	1 ¼	32	721 890 009	8,00	723 690 009	13,70	729 690 409	9,00
50	1 ½	40	721 890 010	12,80	723 690 010	23,00	729 690 410	13,10
63	2	50	721 690 011	16,50	723 690 011	29,10	729 690 411	16,20
75	2 ½	65	198 806 429	168,40		o.a.		o.a.

d (mm)	PP-H Code	EUR	PVDF Code	EUR
32	727 690 408	17,40	735 690 408	45,70
40	727 690 409	23,50	735 690 409	63,10
50	727 690 410	36,10	735 690 410	91,80
63	727 690 411	58,10	735 690 411	143,20
75	198 806 421	380,60	198 806 422	380,60



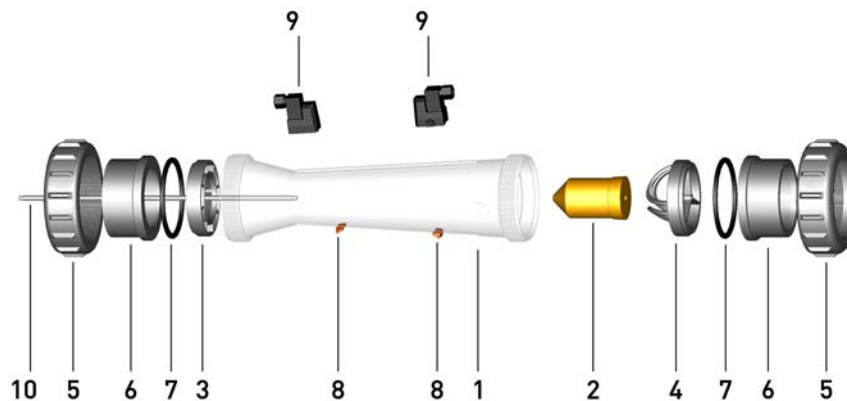
doorstroommeter type 350 vervangingskit

uitvoering:

- vervangingskit bestaat uit: geleider (PVDF/V4A), geleidersteun en bodemdeel

d (mm)	afm. (inch)	DN (mm)	schaal (L/h)	Code	EUR
63	2	50	600-6000, 1000-10000, 1500-15000	199 350 895	226,90
75	2 ½	65	2000-20000, 3000-30000, 8000-80000	199 350 896	236,40

variabele doorstroommeter type 335





meetbuis type 335 met waterschaalverdeling (1)

d (mm)	afm. (inch)	DN (mm)	schaal (l/h)	PVC-U transparant Code	EUR	Polyamide Code	EUR
32	1	25	50 - 500	199 335 055	86,00	199 335 070	95,50
32	1	25	100 - 1000	199 335 056	86,00	199 335 071	95,50
40	1 ¼	32	150 - 1500	199 335 057	99,00	199 335 072	109,30
40	1 ¼	32	250 - 2500	199 335 058	99,00	199 335 073	109,30
50	1 ½	40	200 - 2000	199 335 059	107,90	199 335 074	120,50
50	1 ½	40	300 - 3000	199 335 060	107,90	199 335 075	120,50
50	1 ½	40	600 - 6000	199 335 061	107,90	199 335 076	120,50
63	2	50	600 - 6000	199 335 062	146,60	199 335 077	201,60
63	2	50	1000 - 10000	199 335 063	146,60	199 335 078	201,60
63	2	50	1500 - 15000	199 335 064	146,60	199 335 079	201,60
75	2 ½	65	2000 - 20000	199 335 065	297,90	199 335 080	392,60
75	2 ½	65	3000 - 30000	199 335 066	297,90	199 335 081	392,60
75	2 ½	65	8000 - 60000	199 335 067	297,90	199 335 082	392,60

d (mm)	Polysulfon Code	EUR
32	199 335 085	130,20
32	199 335 086	130,20
40	199 335 087	149,70
40	199 335 088	149,70
50	199 335 089	164,00
50	199 335 090	164,00
50	199 335 091	164,00
63	199 335 092	249,40
63	199 335 093	249,40
63	199 335 094	249,40
75	199 335 095	485,10
75	199 335 096	485,10
75	199 335 097	485,10



meetbuis type 335 zonder schaalverdeling (1)

schaal (l/h)	d (mm)	afm. (inch)	DN (mm)	PVC-U transparant Code	EUR	Polyamide Code	EUR
50 - 500	32	1	25	199 335 255	86,00	199 335 270	95,50
100 - 1000	32	1	25	199 335 256	86,00	199 335 271	95,50
150 - 1500	40	1 ¼	32	199 335 257	99,00	199 335 272	109,30
250 - 2500	40	1 ¼	32	199 335 258	99,00	199 335 273	109,30
200 - 2000	50	1 ½	40	199 335 259	107,90	199 335 274	120,50
300 - 3000	50	1 ½	40	199 335 260	107,90	199 335 275	120,50
600 - 6000	50	1 ½	40	199 335 261	107,90	199 335 276	120,50
600 - 6000	63	2	50	199 335 262	146,60	199 335 277	201,60
1000 - 10000	63	2	50	199 335 263	146,60	199 335 278	201,60
1500 - 15000	63	2	50	199 335 264	146,60	199 335 279	201,60
2000 - 20000	75	2 ½	65	199 335 265	297,90	199 335 280	392,60
3000 - 30000	75	2 ½	65	199 335 266	297,90	199 335 281	392,60
8000 - 60000	75	2 ½	65	199 335 267	297,90	199 335 282	392,60

schaal (l/h)	d (mm)	Polysulfon Code	EUR
50 - 500	32	199 335 285	130,20
100 - 1000	32	199 335 286	130,20
150 - 1500	40	199 335 287	149,70
250 - 2500	40	199 335 288	149,70
200 - 2000	50	199 335 289	164,00
300 - 3000	50	199 335 290	164,00
600 - 6000	50	199 335 291	164,00

tabel gaat verder op volgende pagina

schaal (l/h)	d (mm)	Polysulfon Code	EUR
600 - 6000	63	199 335 292	249,40
1000 - 10000	63	199 335 293	249,40
1500 - 15000	63	199 335 294	249,40
2000 - 20000	75	199 335 295	485,10
3000 - 30000	75	199 335 296	485,70
8000 - 60000	75	199 335 297	485,10

inzet PVDF (3, 4)



top



bottom

DN25 - DN40

d (mm)	afm. (inch)	DN (mm)	schaal (l/h)	boven (4) Code	EUR	onder (3) Code	EUR	onder (3) voor Peek geleidestang Code	EUR
32	1	25	50 - 500	198 335 970	22,70	198 335 977	22,70		
40	1 ¼	32	150 - 1500, 250 - 2500	198 335 971	26,80	198 335 978	26,80		
50	1 ½	40	200 - 2000, 300 - 3000, 600 - 6000	198 335 972	29,80	198 335 979	29,80		
63	2	50	600-6000, 1000-10000, 1500-15000	199 335 974	43,30	198 335 893	25,50		o.a.
75	2 ½	65	2000-20000, 3000-30000, 8000-60000	199 335 975	51,30	198 335 894	29,70		o.a.

vlotter PVDF (2)



DN40



DN50



DN65

d (mm)	afm. (inch)	DN (mm)	schaal (l/h)	zonder magneet Code	EUR	met magneet (bistabiel) Code	EUR
32 - 40	1 - 1 ¼	25 - 32	50 - 500 / 100 - 1000 / 150 - 1500 / 250 - 2500	198 335 455	110,20	198 335 470	145,20
50	1 ½	40	200 - 2000 / 300 - 3000 / 600 - 6000	198 335 457	124,40	198 335 471	154,60
63	2	50	600-6000, 1000-10000, 1500-15000	198 335 458	145,20	198 335 472	180,20
75	2 ½	65	2000 - 20000 / 3000 - 30000	198 335 459	164,70	198 335 473	210,50
75	2 ½	65	8000 - 60000	199 335 460	244,80	199 335 474	288,90



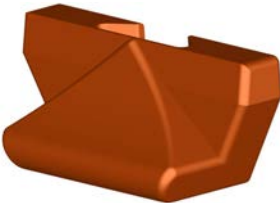
geleidestang (10)

d (mm)	afm. (inch)	DN (mm)	schaal (L/h)	schaal (L/h)	RVS (V4A) Code	EUR	PVDF Code	EUR
63	2	50	600-6000, 1000-10000, 1500-15000	1500 - 15000	198 335 098	87,00	198 335 984	139,20
75	2 ½	65	2000-20000, 3000-30000, 8000-60000	2000 - 20000	198 335 098	87,00	198 335 984	139,20



inzet voor geleidestang PVDF (voor 10)

d (mm)	afm. (inch)	DN (mm)	schaal (L/h)	schaal (L/h)	Code	EUR
63	2	50	600-6000, 1000-10000, 1500-15000	1500 - 15000	198 335 953	41,60
75	2 ½	65	2000-20000, 3000-30000, 8000-60000	2000 - 20000	198 335 954	46,10



doorstroommeter type 335 inchwaarde-indicatie (8)

uitvoering:

- voor alle afmetingen type 335/350

d (mm)	afm. (inch)	DN (mm)	inchwaarde-indicatie Code	EUR
32	1	25	198 335 990	2,20
40	1 ¼	32	198 335 990	2,20
50	1 ½	40	198 335 990	2,20
63	2	50	198 335 990	2,20
75	2 ½	65	198 335 990	2,20



doorstroommeter type 335 O-ringen (7)

d (mm)	afm. (inch)	DN (mm)	EPDM Code	EUR	FKM Code	EUR
32	1	25	748 410 008	5,80	749 410 008	11,00
40	1 ¼	32	748 410 009	5,80	749 410 009	18,70
50	1 ½	40	748 410 010	5,80	749 410 010	20,10
63	2	50	748 410 011	6,10	749 410 011	23,30
75	2 ½	65	748 410 014	8,00	749 410 014	36,70



geleidestang

uitvoering:

- vervangingskit bestaat uit: geleider (10), geleidersteun (voor 10) en bodemdeel (3)
- vervangingskit voor het vervangen van PEEK en RVS geleidestangen

d (mm)	afm. (inch)	DN (mm)	schaal (L/h)	PVDF Code	EUR
63	2	50	600-6000, 1000-10000, 1500-15000	199 335 895	226,90
75	2 ½	65	2000-20000, 3000-30000, 8000-60000	199 335 896	236,40

vervangingsonderdelen variabele doorstroommeter SK50-SK73/SK500-SK730

korte uitvoering meetbuis polysulfon

- meetbuis zonder schaalverdeling

d (mm)	DN (mm)	type	Code	EUR
16	10	SK 50 / 500	198 801 341	99,90
16	10	SK 51 / 510	198 801 342	99,90
16	10	SK 52 / 520	198 801 343	99,90
20	15	SK 60 / 600	198 801 449	107,40
20	15	SK 61 / 610	198 801 450	107,40
20	15	SK 62 / 620	198 801 451	107,40
32	25	SK 70 / 700	198 801 445	124,60
32	25	SK 71 / 710	198 801 338	124,60
32	25	SK 72 / 720	198 801 339	124,60
32	25	SK 73 / 730	198 801 340	124,60

korte uitvoering meetbuis PVC-U transparant

- meetbuis zonder schaalverdeling

d (mm)	DN (mm)	type	Code	EUR
16	10	SK 50 / 500	198 803 790	146,40
16	10	SK 51 / 510	198 803 791	157,70
16	10	SK 52 / 520	198 803 792	156,20
20	15	SK 60 / 600	198 803 793	146,40
20	15	SK 61 / 610	198 803 794	146,40
20	15	SK 62 / 620	198 803 795	101,60
32	25	SK 70 / 700	198 803 796	152,80
32	25	SK 71 / 710	198 803 797	192,90
32	25	SK 72 / 720	198 803 798	169,60
32	25	SK 73 / 730	198 803 799	169,60

**vervangingsonderdelen voor doorstroommeters - SK50-SK73/SK500-SK730
korte uitvoering vlotter van PVDF zonder magneet**



d (mm)	DN (mm)	type	Code	EUR
16	10	SK 50 / 51 / 52	198 806 219	97,80
20	15	SK 60 / 61 / 62	198 806 220	105,20
32	25	SK 70 / 71 / 72 / 73	198 806 221	122,10

**vervangingsonderdelen voor doorstroommeters - SK50-SK73/SK500-SK730
korte uitvoering vlotter van PVDF met magneet**



d (mm)	DN (mm)	type	Code	EUR
16	10	SK 500 / 510 / 520	198 806 222	212,60
20	15	SK 600 / 610 / 620	198 806 223	237,20
32	25	SK 700 / 710 / 720 / 730	198 806 224	286,20

**vervangingsonderdelen voor doorstroommeters - SK50-SK73/SK500-SK730
korte uitvoering vlotter van PTFE zonder magneet**



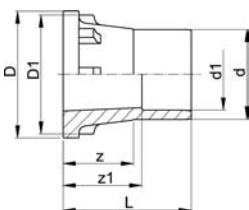
d (mm)	DN (mm)	type	Code	EUR
32	25	SK 73	198 807 166	206,70

vervangingsonderdelen voor doorstroommeters - SK50-SK73/SK500-SK730
korte uitvoering bovendeel PVDF



d (mm)	DN (mm)		type	Code	EUR
16	10	SK 50 / 500; 51 / 510; 52 / 520		198 807 188	17,80
20	15	SK 60 / 600; 61 / 610; 62 / 620		198 807 187	19,30
32	25	SK 70 / 700; 71 / 710; 72 / 720; 73 / 730		198 807 182	24,20

inlegdelen



inlegdeel met lijmeind PVC-U metrisch

Voor in 3-dlg koppelingen, membraanafsluiters, tankaansluitingen en variabele doorstroommeters. In combinatie met adapterring 167481182 t/m 167481187 ook toepasbaar in kogelkranen en terugslagkleppen 5XX.

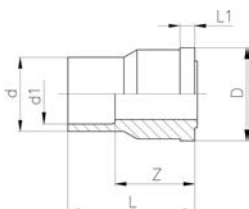
uitvoering:

- lijmeind met gereduceerde lijmmof metrisch
- voor 3-dlg koppelingen, tankaansluitingen en membraanafsluiter type 514

	d (mm)	d1 (mm)	PN (bar)	Code	EUR	gewicht (kg)	z (mm)	z1 (mm)	D (mm)	D1 (mm)	L (mm)
*	16	12	16	721 500 405	2,80	0,010	22	24	24	22	36
*	20	16	16	721 500 406	2,80	0,009	24	26	30	28	40
*	25	20	16	721 500 407	3,10	0,026	25	28	39	36	44
*	32	25	16	721 500 408	4,00	0,035	27	30	45	42	49
	40	32	16	721 500 409	4,70	0,055	31	35	57	53	57
	50	40	16	721 500 410	8,90	0,085	35	40	63	59	66
	63	50	16	721 500 411	13,20	0,108	39	46	79	74	77

inlegdeel PVC-U metrisch

Voor in 3-dlg koppelingen, membraanafsluiters, tankaansluitingen en variabele doorstroommeters. In combinatie met adapterring 167481182 t/m 167481187 ook toepasbaar in kogelkranen en terugslagkleppen 5XX.



uitvoering:

- voor 3-dlg koppeling 721 550 305-307

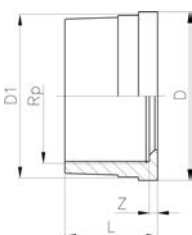
	d (mm)	d1 (mm)	PN (bar)	Code	EUR	gewicht (kg)	z (mm)	D (mm)	L (mm)	L1 (mm)
	16	12	16	721 600 305	3,60	0,005	22	19	34	3
	20	16	16	721 600 306	7,70	0,009	24	24	38	5
	25	20	16	721 600 307	10,50	0,016	27	30	43	5

inlegdeel PVC-U Rp

Voor in 3-dlg koppelingen, membraanafsluiters, tankaansluitingen en variabele doorstroommeters. In combinatie met adapterring 167481182 t/m 167481187 ook toepasbaar in kogelkranen en terugslagkleppen 5XX.

uitvoering:

- met parallelle binnendraad Rp



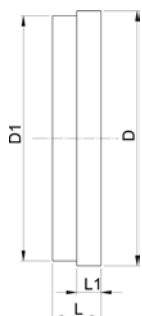
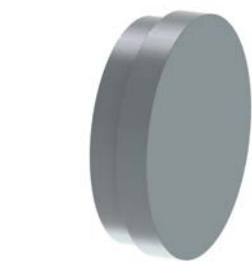
	draad (inch)	afm. (bar)	PN (bar)	Code	EUR	gewicht (kg)	z (mm)	D (mm)	D1 (mm)	L (mm)
	Rp	¼	10	721 600 654	8,90	0,004	5	20	18	15
	Rp	⅜	10	721 600 655	8,20	0,005	6	24	22	17
	Rp	½	10	721 600 656	8,00	0,010	6	30	28	19
	Rp	¾	10	721 600 657	8,90	0,015	7	39	36	22
	Rp	1	10	721 600 658	13,20	0,019	8	45	42	25
	Rp	1 ¼	10	721 600 659	19,20	0,038	10	57	53	29
	Rp	1 ½	10	721 600 660	24,00	0,057	11	63	59	34
	Rp	2	10	721 600 661	24,00	0,102	18	78	74	41

inlegdeel PVC-U blind

Voor in 3-dlg koppelingen, membraanafsluiters, tankaansluitingen en variabele doorstroommeters. In combinatie met adapterring 167481182 t/m 167481187 ook toepasbaar in kogelkranen en terugslagkleppen 5XX.

uitvoering:

- voor 3-dlg koppelingen, tankaansluitingen en membraanafsluiter type 514
- vlakke afdichtzijde



d	DN	afm.	PN	Code	EUR	gewicht	D	D1	L	L1	d	afm.
(mm)	(mm)	(inch)	(bar)			(kg)	(mm)	(mm)	(mm)	(mm)	(mm)	(inch)
10/12		1/8	16	721 600 004	11,60	0,006	20	18	9	4		
16	10	3/8	16	721 600 005	12,60	0,004	24	22	10	5		
20	15	1/2	16	721 600 006	13,20	0,009	30	28	11	5		
25	20	3/4	16	721 600 007	14,60	0,017	39	36	11	6		
32	25	1	16	721 600 008	17,20	0,025	45	42	12	6		
40	32	1 1/4	16	721 600 009	22,00	0,042	57	53	13	7		
50	40	1 1/2	16	721 600 010	35,70	0,061	63	59	16	7		
63	50	2	16	721 600 011	44,20	0,108	78	74	18	8		
75	65	2 1/2	10	721 600 012	52,10	0,216	101	90	22	10		
90	80	3	10	721 600 013	62,00	0,333	121	108	24	11		
110	100	4	10	721 600 014	80,80	0,530	146	131	26	12		

ecoFIT inlegdeel PE80 d20-63mm / SDR17

uitvoering:

- met lasmof, metrisch
- voor 3-dlg koppelingen, tankaansluitingen en membraanafsluiter type 514
- voor 3-delige overgangskoppelingen 29 53 02, 29 53 07, 29 55 02, 29 55 07
- materiaal: PP-H
- met lijmmof metrisch
- voor 3-delige koppelingen: 729 510 106-114, 729 510 156-164
- met lijmmof metrisch
- met lasmof, metrisch
- alleen voor PP-H versie verkrijgbaar
- voor 3-delige koppeling 29 51 01

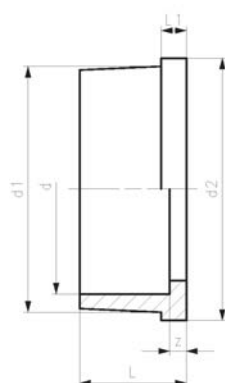
voor DN65 PVDF alleen spie-eind

* NIET gebruiken voor 3-delige koppelingen 721510112, 721510313 en 721510137, 721510338, alleen geschikt voor variabele doorstroommeters

* voor 3-dlg overgangskoppelingen 21 53 02, 21 53 07, 21 55 02, 21 55 07 oude uitvoering

* NIET gebruiken voor 3-delige koppelingen 721510112, 721510313 en 721510137, 721510338, alleen geschikt voor variabele doorstroommeters

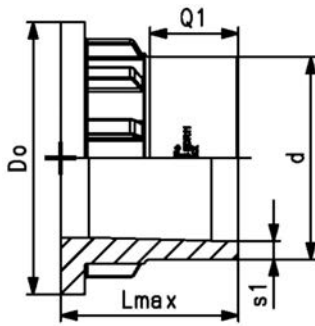
* alleen voor variabele doorstroommeters



d	DN	PN	Code	EUR	gewicht	d1	d2	L	L1	z	afm.
(mm)	(mm)	(bar)			(kg)	(mm)	(mm)	(mm)	(mm)	(mm)	(inch)
20	15	10	734 600 106	4,30	0,006	28	30	19	5	5	
25	20	10	734 600 107	4,80	0,013	36	39	21	5	5	
32	25	10	734 600 108	5,50	0,015	42	45	23	6	5	
40	32	10	734 600 109	7,10	0,026	53	57	25	6	5	
50	40	10	734 600 110	8,50	0,027	59	63	28	7	5	
63	50	10	734 600 111	9,40	0,044	74	79	32	8	5	
*	75	65	700 246 419	162,50	0,163	90		47		3	2 1/2



ecoFIT inlegdeel PE100
d20-110mm / SDR11

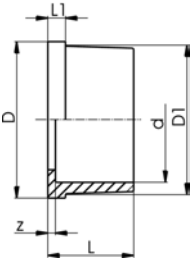


uitvoering:

- voor conventioneel stompassen conform DVS 2207
 - IR = infrarood (IR Plus®) compatibel
 - voor de afmetingen d75-110 gebruiksaanwijzing in acht nemen
 - materiaal: PP-H
 - voor 3-dlg koppelingen, tankaansluitingen en membraanafsluiter type 514
 - lijmeind met gereduceerde lijmmof metrisch
 - past op 3-dlg moflaskoppeling SYGEF Standaard
 - materiaal: PVDF
 - alleen voor PP-H versie verkrijgbaar
 - materiaal: PE100
 - Infrarood (IR Plus) compatibel. Kies lasparameters: PP-H
 - voor conventioneel stompassen conform DVS 2207
 - voor stompassen, IR-lassen en elektrolassen
- * alleen voor variabele doorstroommeters

d (mm)	DN (mm)	PN (bar)	SDR	FM	korte uitvoering Code	EUR	gewicht (kg)
20	15	16	11	IR	753 508 606	6,20	0,011
25	20	16	11	IR	753 508 607	8,20	0,018
32	25	16	11	IR	753 508 608	8,20	0,027
40	32	16	11	IR	753 508 609	13,30	0,044
50	40	16	11	IR	753 508 610	13,30	0,061
63	50	16	11	IR	753 508 611	14,80	0,100
75	65	10		IR	753 608 612	22,00	0,147
*	75	65	10		700 246 420	130,70	0,300
90	80	10		IR	753 608 613	26,60	0,156
110	100	10		IR	753 608 614	36,60	0,226

d (mm)	D (mm)	L (mm)	L1 (mm)	Do (mm)	Lmax (mm)	e (mm)	Q1 (mm)	s1 (mm)	afm. (inch)
20	30	67	52	30	54	2	38	1,9	
25	39	71	53	39	57	2	42	2,3	
32	45	73	55	45	60	3	41	2,9	1
40	57	81	60	57	63	4	42	3,7	1 ¼
50	63	87	66	63	66	5	44	4,6	1 ½
63	78	93	70	78	69	6	45	5,8	2
75				101	66		34	6,8	
*	75			101	66		34	6,8	
90				101	66		55	8,2	
110				121	66		55	10,0	



PROGEF Standaard inlegdeel, PP-H (PN10)

Voor in 3-dlg koppelingen, membraanafsluiters, tankaansluitingen en variabele doorstroommeters. In combinatie met adapterring 167481182 t/m 167481187 ook toepasbaar in kogelkranen en terugslagkleppen 5XX.

uitvoering:

- materiaal: PP-H
- met lasmof, metrisch
- voor 3-delige overgangskoppelingen 29 53 02, 29 53 07, 29 55 02, 29 55 07
- voor 3-dlg koppelingen, tankaansluitingen en membraanafsluiter type 514
- met lijmmof metrisch
- voor 3-delige koppelingen: 729 510 106-114, 729 510 156-164
- met lijmmof metrisch
- alleen voor PP-H versie verkrijgbaar
- voor 3-delige koppeling 29 51 01

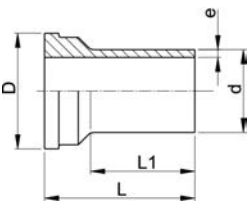
voor DN65 PVDF alleen spie-eind

* NIET gebruiken voor 3-delige koppelingen 721510112, 721510313 en 721510137, 721510338, alleen geschikt voor variabele doorstroommeters

* voor 3-dlg overgangskoppelingen 21 53 02, 21 53 07, 21 55 02, 21 55 07 oude uitvoering

* NIET gebruiken voor 3-delige koppelingen 721510112, 721510313 en 721510137, 721510338, alleen geschikt voor variabele doorstroommeters

d (mm)	PN (bar)	SDR	FM	Code	EUR	gewicht (kg)	D (mm)	D1 (mm)	L (mm)	L1 (mm)	z (mm)
16	10			727 500 105	3,40	0,003	24	22	18	4	3
20	10			727 500 106	3,50	0,006	30	28	19	5	3
25	10			727 500 107	4,00	0,011	39	36	21	5	3
32	10			727 500 108	4,40	0,014	45	42	23	6	3
40	10			727 500 109	5,80	0,025	57	53	25	6	3
50	10			727 500 110	7,10	0,025	63	59	28	7	3
63	10			727 500 111	7,50	0,043	79	74	32	8	3
75	10	11	IR	727 500 312	33,00	0,090	103	91	36	10	3
90	10	11	IR	727 500 313	41,80	0,130	123	108	42	11	5
110	10	11	IR	727 500 314	51,30	0,220	148	131	49	12	6



PROGEF Standaard inlegdeel, PP-H (PN10)

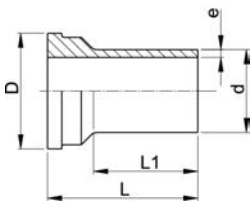
Voor in 3-dlg koppelingen, membraanafsluiters, tankaansluitingen en variabele doorstroommeters. In combinatie met adapterring 167481182 t/m 167481187 ook toepasbaar in kogelkranen en terugslagkleppen 5XX.

uitvoering:

- materiaal: PP-H
- voor 3-dlg koppelingen, tankaansluitingen en membraanafsluiter type 514
- IR = infrarood (IR Plus®) compatibel
- lijmeind met gereduceerde lijmmof metrisch
- past op 3-dlg moflaskoppeling SYGEF Standaard
- alleen voor PP-H versie verkrijgbaar
- voor conventioneel stomplussen conform DVS 2207

* alleen voor variabele doorstroommeters

d (mm)	PN (bar)	SDR	FM	Code	EUR	gewicht (kg)	D (mm)	L (mm)	L1 (mm)	e (mm)	DN (mm)	afm. (inch)	
20	10	11	IR	727 508 506	7,10	0,009	30	53	38	1,9			
25	10	11	IR	727 508 507	8,70	0,017	39	57	42	2,3			
32	10	11	IR	727 508 508	8,70	0,026	45	60	41	2,9			
40	10	11	IR	727 508 509	14,20	0,043	57	63	42	3,7			
50	10	11	IR	727 508 510	14,20	0,058	63	66	44	4,6			
63	10	11	IR	727 508 511	15,90	0,095	78	69	45	5,8			
75	10	11	IR	727 508 212	23,20	0,146	103	66	34	6,8			
*	75	10	11	IR	700 256 401	55,40	0,172	101	66	34	6,8	65	2 ½
75	10	11	IR	727 508 512	23,20	0,146	101	66	34	6,8			
90	10	11	IR	727 508 213	28,40	0,158	103	66	45	8,2			
90	10	11	IR	727 508 513	28,40	0,158	101	66	45	8,2			
110	10	11	IR	727 508 214	39,30	0,200	123	66	40	10,0			
110	10	11	IR	727 508 514	39,30	0,233	121	66	40	10,0			



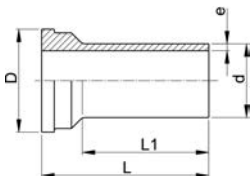
PROGEF Standaard inlegdeel SDR17.6 (PN6)

Voor in 3-dlg koppelingen, membraanafsluiters, tankaansluitingen en variabele doorstroommeters. In combinatie met adapterring 167481182 t/m 167481187 ook toepasbaar in kogelkranen en terugslagkleppen 5XX.

uitvoering:

- materiaal: PP-H
 - IR = IR-lassen compatible
 - voor conventioneel stomplassen conform DVS 2207
- voor de afmetingen d75-110 gebruiksaanwijzing in acht nemen

d (mm)	PN (bar)	SDR	FM	Code	EUR	gewicht (kg)	D (mm)	L (mm)	L1 (mm)	e (mm)
75	6	17.6	IR	727 608 412	23,20	0,121	101	66	34	4,3
90	6	17.6	IR	727 608 413	28,40	0,113	101	66	45	5,1
110	6	17.6	IR	727 608 414	39,30	0,163	121	66	40	6,3



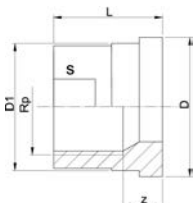
PROGEF Standaard inlegdeel lang SDR11 (PN10)

Voor in 3-dlg koppelingen, membraanafsluiters, tankaansluitingen en variabele doorstroommeters. In combinatie met adapterring 167481182 t/m 167481187 ook toepasbaar in kogelkranen en terugslagkleppen 5XX.

uitvoering:

- materiaal: PP-H
- IR = IR-lassen compatible
- voor conventioneel stomplassen conform DVS 2207
- past op 3-dlg koppelingen, membraanafsluiter type 314 en vortex sensoren

d (mm)	PN (bar)	SDR	FM	Code	EUR	gewicht (kg)	D (mm)	L (mm)	L1 (mm)	e (mm)
20	10	11	IR	727 608 516	6,60	0,011	30	67	52	1,9
25	10	11	IR	727 608 517	7,90	0,018	39	71	53	2,3
32	10	11	IR	727 608 518	9,70	0,024	45	73	55	2,9
40	10	11	IR	727 608 519	12,60	0,041	57	81	60	3,7
50	10	11	IR	727 608 520	13,10	0,054	63	87	66	4,6
63	10	11	IR	727 608 521	19,00	0,122	78	93	70	5,8



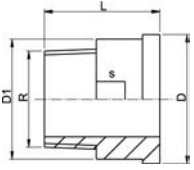
inlegdeel RVS Rp

Voor in 3-dlg koppelingen, membraanafsluiters, tankaansluitingen en variabele doorstroommeters. In combinatie met adapterring 167481182 t/m 167481187 ook toepasbaar in kogelkranen en terugslagkleppen 5XX.

uitvoering:

- materiaal: RVS 1.4404 (316L)
- met parallele binnendraad Rp

d (mm)	draad (inch)	afm. (inch)	PN (bar)	Code	EUR	gewicht (kg)	z (mm)	D (mm)	D1 (mm)	L (mm)	s (mm)
16	Rp	3/8	16	724 600 655	55,20	0,030	9	24	22	19	19
20	Rp	1/2	16	724 600 656	57,80	0,060	11	30	28	24	24
25	Rp	3/4	16	724 600 657	62,00	0,092	11	39	36	26	29
32	Rp	1	16	724 600 658	67,90	0,137	12	45	42	29	36
40	Rp	1 1/4	16	724 600 659	97,80	0,226	14	57	53	33	45
50	Rp	1 1/2	16	724 600 660	108,50	0,314	15	63	59	34	54
63	Rp	2	16	724 600 661	142,10	0,438	15	78	74	39	63



inlegdeel RVS R

Voor in 3-dlg koppelingen, membraanafsluiters, tankaansluitingen en variabele doorstroommeters. In combinatie met adapterring 167481182 t/m 167481187 ook toepasbaar in kogelkranen en terugslagkleppen 5XX.

uitvoering:

- materiaal: RVS 1.4404 (316L)
- konische buitendraad R

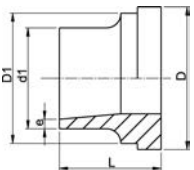
d (mm)	draad (inch)	afm. (inch)	PN (bar)	Code	EUR	gewicht (kg)	D (mm)	D1 (mm)	L (mm)	s (mm)
16	R	3/8	16	724 600 705	57,80	0,052	24	22	30	19
20	R	1/2	16	724 600 706	60,80	0,083	30	28	34	24
25	R	3/4	16	724 600 707	64,60	0,125	39	36	36	32
32	R	1	16	724 600 708	68,70	0,189	45	42	40	37
40	R	1 1/4	16	724 600 709	101,70	0,356	57	53	46	48
50	R	1 1/2	16	724 600 710	110,10	0,407	63	59	48	54
63	R	2	16	724 600 711	181,70	0,668	78	74	55	69

inlegdeel RVS laseind

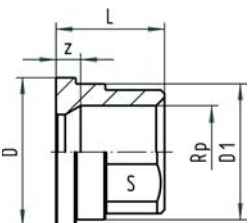
Voor in 3-dlg koppelingen, membraanafsluiters, tankaansluitingen en variabele doorstroommeters. In combinatie met adapterring 167481182 t/m 167481187 ook toepasbaar in kogelkranen en terugslagkleppen 5XX.

uitvoering:

- materiaal: RVS 1.4404 (316L)



d1 (mm)	d (mm)	PN (bar)	Code	EUR	gewicht (kg)	D (mm)	D1 (mm)	L (mm)	e (mm)
17	16	16	724 605 505	37,20	0,029	24	22	18	1,6
21	20	16	724 605 506	43,00	0,046	30	28	22	2,0
27	25	16	724 605 507	49,60	0,080	39	36	23	2,0
34	32	16	724 605 508	54,00	0,112	45	42	26	2,0
42	40	16	724 605 509	78,40	0,188	57	53	26	2,0
48	50	16	724 605 510	89,30	0,222	63	59	28	2,0
60	63	16	724 605 511	114,30	0,361	78	74	32	2,6



inlegdeel, messing Rp

Voor in 3-dlg koppelingen, membraanafsluiters, tankaansluitingen en variabele doorstroommeters. In combinatie met adapterring 167481182 t/m 167481187 ook toepasbaar in kogelkranen en terugslagkleppen 5XX.

uitvoering:

- inlegdeel: messing met parallelle binnendraad Rp

draad	afm. (inch)	d (mm)	Code	EUR	gewicht (kg)	L (mm)	s (mm)	D (mm)	D1 (mm)	z (mm)
Rp	1/2	20	720 600 236	11,30	0,059	22	25	30	28	5
Rp	3/4	25	720 600 237	15,40	0,100	25	30	39	36	6
Rp	1	32	720 600 238	18,40	0,128	27	36	45	42	6
Rp	1 1/4	40	720 600 239	27,70	0,211	31	46	56	53	7
Rp	1 1/2	50	720 600 240	35,20	0,324	35	55	62	59	7
Rp	2	63	720 600 241	52,10	0,510	40	65	78	74	8
Rp	2 1/2	75	720 600 242	131,90	0,893	47	85	100	92	10
Rp	3	90	720 600 243	242,10	1,395	52	95	121	110	11

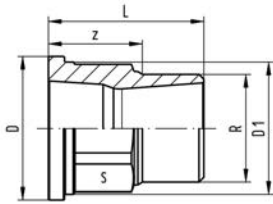


inlegdeel messing R

Voor in 3-dlg koppelingen, membraanafsluiters, tankaansluitingen en variabele doorstroommeters. In combinatie met adapterring 167481182 t/m 167481187 ook toepasbaar in kogelkranen en terugslagkleppen 5XX.

uitvoering:

- inlegdeel: messing met konische buitendraad R



d	draad	afm.	Code	EUR	gewicht	z	D1	D	s	L
(mm)		(inch)			(kg)	(mm)	(mm)	(mm)	(mm)	(mm)
20	R	½	720 600 246	13,40	0,092	22	28	30	25	37
25	R	¾	720 600 247	18,00	0,151	25	36	39	30	42
25	R	½	720 600 257	23,00	0,142	27	36	39	30	42
32	R	1	720 600 248	23,20	0,216	28	42	45	36	46
32	R	½	720 600 258	28,40	0,113	31	42	45	36	46
32	R	¾	720 600 268	28,40	0,206	30	42	45	36	46
40	R	1 ¼	720 600 249	34,90	0,408	32	53	56	46	52
50	R	1 ½	720 600 250	43,00	0,538	36	59	62	55	56
63	R	2	720 600 251	63,90	0,859	42	74	78	65	67
75	R	2 ½	720 600 252	170,70	1,446	49	92	100	85	77
90	R	3	720 600 253	284,90	2,063	54	110	121	95	86

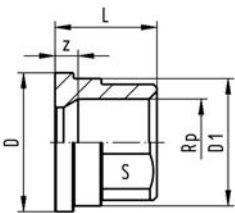


inlegdeel malleabel gegalvaniseerd Rp

Voor in 3-dlg koppelingen, membraanafsluiters, tankaansluitingen en variabele doorstroommeters. In combinatie met adapterring 167481182 t/m 167481187 ook toepasbaar in kogelkranen en terugslagkleppen 5XX.

uitvoering:

- inlegdeel: malleabel met parallel binnendraad RP



d	draad	afm.	PN	Code	EUR	gewicht	D	L	s	z	D1
(mm)		(inch)	(bar)			(kg)	(mm)	(mm)	(mm)	(mm)	(mm)
20	Rp	½	16	724 600 206	4,50	0,037	30	22	25	9	27
25	Rp	¾	16	724 600 207	5,00	0,072	39	22	31	7	36
32	Rp	1	16	724 600 208	5,60	0,088	44	26	38	9	41
40	Rp	1 ¼	16	724 600 209	7,40	0,172	56	31	48	12	52
50	Rp	1 ½	16	724 600 210	10,30	0,210	62	33	54	14	58
63	Rp	2	16	724 600 211	16,20	0,324	78	35	67	11	73
75	Rp	2 ½	16	724 600 212	35,20	0,557	100	39	85	12	92
90	Rp	3	16	724 600 213	63,90	0,650	110	45	96	15	104

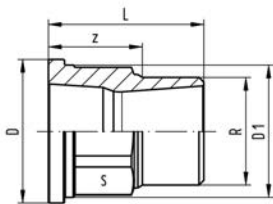


inlegdeel malleabel gegalvaniseerd R

Voor in 3-dlg koppelingen, membraanafsluiters, tankaansluitingen en variabele doorstroommeters. In combinatie met adapterring 167481182 t/m 167481187 ook toepasbaar in kogelkranen en terugslagkleppen 5XX.

uitvoering:

- inlegdeel: malleabel met konische buitendraad R



draad	afm.	d	Code	EUR	gewicht	D	L	D1	z	s
(inch)	(mm)	(mm)			(kg)	(mm)	(mm)	(mm)	(mm)	(mm)
R	½	20	724 600 806	6,60	0,069	30	40	27	25	23
R	¾	25	724 600 807	6,20	0,115	39	43	36	27	30
R	1	32	724 600 808	7,90	0,161	44	48	41	29	36
R	1 ¼	40	724 600 809	13,20	0,294	56	57	52	36	48
R	1 ½	50	724 600 810	15,20	0,353	62	59	58	37	54
R	2	63	724 600 811	21,40	0,570	78	62	73	36	66
R	2 ½	75	724 600 812	45,00	0,980	97	75	92	45	85
R	3	90	724 600 813	80,30	1,217	110	80	104	47	95

wartelmoeren

Index

Code	pagina	EUR	Code	pagina	EUR	Code	pagina	EUR
198 335 098	27, 27	87,00	198 350 056	21	o.a.	198 801 388	18	12,30
198 335 160	11	811,60	198 350 057	21	o.a.	198 801 389	18	12,30
198 335 161	11	1.262,40	198 350 058	21	o.a.	198 801 390	18	12,30
198 335 162	11	1.262,40	198 350 059	21	o.a.	198 801 391	18	12,30
198 335 163	11	1.713,60	198 350 060	21	o.a.	198 801 392	18	12,30
198 335 164	11	1.731,20	198 350 061	21	o.a.	198 801 393	18	12,30
198 335 165	11	2.507,50	198 350 062	21	o.a.	198 801 394	18	12,30
198 335 166	11	2.539,60	198 350 063	21	o.a.	198 801 395	18	12,30
198 335 455	26	110,20	198 350 064	21	o.a.	198 801 445	28	124,60
198 335 457	26	124,40	198 350 065	21	o.a.	198 801 449	28	107,40
198 335 458	26	145,20	198 350 066	21	241,10	198 801 450	28	107,40
198 335 459	26	164,70	198 350 067	21	o.a.	198 801 451	28	107,40
198 335 470	26	145,20	198 350 070	21	o.a.	198 801 880	9	188,40
198 335 471	26	154,60	198 350 071	21	o.a.	198 801 881	9	188,40
198 335 472	26	180,20	198 350 072	21	o.a.	198 801 882	9	188,40
198 335 473	26	210,50	198 350 073	21	o.a.	198 801 883	9	202,60
198 335 893	26	25,50	198 350 074	21	o.a.	198 801 884	9	202,60
198 335 894	26	29,70	198 350 075	21	o.a.	198 801 885	9	202,60
198 335 953	23, 27	41,60	198 350 076	21	o.a.	198 801 886	9	233,60
198 335 954	23, 23, 23, 27	46,10	198 350 077	21	o.a.	198 801 887	9	233,60
198 335 962	13	780,20	198 350 078	21	o.a.	198 801 888	9	233,60
198 335 963	13	945,60	198 350 079	21	o.a.	198 801 889	9	233,60
198 335 964	13	780,20	198 350 080	21	o.a.	198 801 890	8	298,00
198 335 965	13	780,20	198 350 081	21	o.a.	198 801 891	8	298,00
198 335 966	13	757,50	198 350 082	21	o.a.	198 801 892	8	298,00
198 335 967	13	780,20	198 350 085	21	o.a.	198 801 893	8	322,70
198 335 968	13	780,20	198 350 086	21	o.a.	198 801 894	8	322,70
198 335 969	13	945,60	198 350 087	21	o.a.	198 801 895	8	322,70
198 335 970	22, 22, 26	22,70	198 350 088	21	o.a.	198 801 896	8	416,40
198 335 971	22, 22, 26	26,80	198 350 089	21	o.a.	198 801 897	8	416,40
198 335 972	22, 22, 22, 26	29,80	198 350 090	21	165,60	198 801 898	8	416,40
198 335 973	22, 22	43,30	198 350 091	21	o.a.	198 801 899	8	416,40
198 335 974	22	43,30	198 350 092	21	o.a.	198 801 961	18	12,30
198 335 975	22, 22, 22	44,00	198 350 093	21	189,20	198 801 962	18	12,30
198 335 977	22, 22, 26	22,70	198 350 094	21	252,00	198 801 963	18	12,30
198 335 978	22, 22, 26	26,80	198 350 095	21	o.a.	198 801 964	18	12,30
198 335 979	22, 22, 22, 26	29,80	198 350 096	21	o.a.	198 801 965	18	12,30
198 335 980	22, 22	43,30	198 350 097	21	o.a.	198 801 966	18	12,30
198 335 984	27, 27	139,20	198 350 098	23, 23, 23, 23	87,00	198 801 967	18	12,30
198 335 987	23, 23, 23	47,20	198 350 980	23, 23, 23, 23	71,10	198 801 968	18	12,30
198 335 990	23, 23, 23, 23, 23, 27, 27, 27, 27, 27	2,20	198 350 981	23, 23, 23, 23	139,20	198 801 969	18	12,30
198 335 991	13	780,20	198 801 308	19	40,30	198 801 970	18	12,30
198 335 992	13	945,60	198 801 309	19	40,30	198 803 310	9	148,90
198 335 993	13	780,20	198 801 310	19	40,30	198 803 311	9	148,90
198 335 994	13	780,20	198 801 311	19	40,30	198 803 312	9	148,90
198 335 995	13	780,20	198 801 312	19	40,30	198 803 313	9	159,90
198 335 998	13	110,90	198 801 313	19	40,30	198 803 314	9	159,90
198 335 999	13	110,90	198 801 314	19	40,30	198 803 315	9	159,90
198 350 055	21	o.a.	198 801 315	19	40,30	198 803 316	9	187,80
			198 801 316	19	40,30	198 803 317	9	187,80
			198 801 317	19	40,30	198 803 318	9	187,80
			198 801 338	28	124,60	198 803 319	9	187,80
			198 801 339	28	124,60	198 803 320	8	245,20
			198 801 340	28	124,60	198 803 321	8	245,20
			198 801 341	28	99,90	198 803 322	8	245,20
			198 801 342	28	99,90	198 803 323	8	262,00
			198 801 343	28	99,90	198 803 324	8	262,00
			198 801 386	18	12,30	198 803 325	8	262,00
			198 801 387	18	12,30	198 803 326	8	306,10
						198 803 327	8	306,10
						198 803 328	8	306,10
						198 803 329	8	306,10

Index

Code	pagina	EUR	Code	pagina	EUR	Code	pagina	EUR
198 803 790	28	146,40	198 807 168	20	408,30	199 335 058	25	99,00
198 803 791	28	157,70	198 807 169	20	491,00	199 335 059	25	107,90
198 803 792	28	156,20	198 807 170	20	491,00	199 335 060	25	107,90
198 803 793	28	146,40	198 807 171	20	317,10	199 335 061	25	107,90
198 803 794	28	146,40	198 807 172	20	408,30	199 335 062	25	146,60
198 803 795	28	101,60	198 807 182	30	24,20	199 335 063	25	146,60
198 803 796	28	152,80	198 807 187	30	19,30	199 335 064	25	146,60
198 803 797	28	192,90	198 807 188	30	17,80	199 335 065	25	297,90
198 803 798	28	169,60	198 807 202	10	651,70	199 335 066	25	297,90
198 803 799	28	169,60	198 807 209	10	651,70	199 335 067	25	297,90
198 803 905	12	790,40	198 807 210	10	651,70	199 335 068	14	23,80
198 803 906	12	790,40	199 335 000	5	198,60	199 335 069	14	23,80
198 803 907	12	1.159,50	199 335 001	5	198,60	199 335 070	25	95,50
198 803 908	12	1.159,50	199 335 002	5	236,20	199 335 071	25	95,50
198 803 909	12	1.680,20	199 335 003	5	236,20	199 335 072	25	109,30
198 803 910	12	1.680,20	199 335 004	5	267,90	199 335 073	25	109,30
198 803 911	12	2.122,70	199 335 005	5	267,90	199 335 074	25	120,50
198 803 912	12	2.572,50	199 335 006	5	267,90	199 335 075	25	120,50
198 806 219	29	97,80	199 335 007	5	425,90	199 335 076	25	120,50
198 806 220	29	105,20	199 335 008	5	425,90	199 335 077	25	201,60
198 806 221	29	122,10	199 335 009	5	425,90	199 335 078	25	201,60
198 806 222	29	212,60	199 335 010	5	669,20	199 335 079	25	201,60
198 806 223	29	237,20	199 335 011	5	669,20	199 335 080	25	392,60
198 806 224	29	286,20	199 335 012	5	669,20	199 335 081	25	392,60
198 806 421	24	380,60	199 335 020	5	247,60	199 335 082	25	392,60
198 806 422	24	380,60	199 335 021	5	247,60	199 335 083	14	23,80
198 806 429	24	168,40	199 335 022	5	283,50	199 335 084	14	23,80
198 806 466	12	766,70	199 335 023	5	283,50	199 335 085	25	130,20
198 806 467	12	766,70	199 335 024	5	333,70	199 335 086	25	130,20
198 806 468	12	1.126,40	199 335 025	5	333,70	199 335 087	25	149,70
198 806 469	12	1.364,90	199 335 026	5	333,70	199 335 088	25	149,70
198 806 470	12	1.630,50	199 335 027	5	532,40	199 335 089	25	164,00
198 806 471	12	1.630,50	199 335 028	5	532,40	199 335 090	25	164,00
198 806 511	19	40,30	199 335 029	5	532,40	199 335 091	25	164,00
198 806 512	19	40,30	199 335 030	5	836,30	199 335 092	25	249,40
198 806 513	19	40,30	199 335 031	5	836,30	199 335 093	25	249,40
198 806 514	19	40,30	199 335 032	5	836,30	199 335 094	25	249,40
198 806 515	19	40,30	199 335 033	14	23,80	199 335 095	25	485,10
198 806 516	19	40,30	199 335 034	14	23,80	199 335 096	25	485,10
198 806 517	19	39,30	199 335 035	14	23,80	199 335 097	25	485,10
198 806 518	19	40,30	199 335 036	14	23,80	199 335 100	4	280,70
198 806 519	19	40,30	199 335 037	14	23,80	199 335 101	4	280,70
198 806 520	19	40,30	199 335 038	14	23,80	199 335 102	4	332,60
198 806 521	19	40,30	199 335 039	14	23,80	199 335 103	4	332,60
198 806 522	19	40,30	199 335 040	5	240,40	199 335 104	4	396,00
198 806 523	19	40,30	199 335 041	5	240,40	199 335 105	4	396,00
198 806 524	19	40,30	199 335 042	5	287,70	199 335 106	4	396,00
198 806 525	19	40,30	199 335 043	5	287,70	199 335 107	4	634,90
198 806 526	19	40,30	199 335 044	5	333,60	199 335 108	4	634,90
198 806 527	19	40,30	199 335 045	5	333,60	199 335 109	4	634,90
198 806 528	19	40,30	199 335 046	5	333,60	199 335 110	4	807,30
198 806 529	19	40,30	199 335 047	5	521,50	199 335 111	4	807,30
198 806 530	19	40,30	199 335 048	5	521,50	199 335 112	4	807,30
198 806 531	20	40,30	199 335 049	5	521,50	199 335 120	4	351,10
198 806 532	20	40,30	199 335 050	5	810,50	199 335 121	4	351,10
198 806 533	20	40,30	199 335 051	5	810,50	199 335 122	4	404,40
198 806 534	20	40,30	199 335 052	5	810,50	199 335 123	4	404,40
198 806 535	20	40,30	199 335 053	14	23,80	199 335 124	4	493,70
198 806 536	20	40,30	199 335 054	14	23,80	199 335 125	4	493,70
198 806 537	20	40,30	199 335 055	25	86,00	199 335 126	4	493,70
198 807 166	29	206,70	199 335 056	25	86,00	199 335 127	4	793,10
198 807 167	20	317,10	199 335 057	25	99,00	199 335 128	4	793,10

Index

Code	pagina	EUR	Code	pagina	EUR	Code	pagina	EUR
199 335 129	4	793,10	199 335 659	14	23,80	199 350 010	7	689,50
199 335 130	4	1.008,90	199 335 660	14	23,80	199 350 011	7	689,50
199 335 131	4	1.008,90	199 335 661	14	23,80	199 350 012	7	689,50
199 335 132	4	1.008,90	199 335 662	14	23,80	199 350 020	7	254,90
199 335 140	4	348,10	199 335 663	14	23,80	199 350 021	7	254,90
199 335 141	4	348,10	199 335 664	14	23,80	199 350 022	7	291,80
199 335 142	4	420,30	199 335 665	14	23,80	199 350 023	7	291,80
199 335 143	4	420,30	199 335 666	14	23,80	199 350 024	7	343,60
199 335 144	4	500,50	199 335 667	14	23,80	199 350 025	7	343,60
199 335 145	4	500,50	199 335 670	15	23,80	199 350 026	7	343,60
199 335 146	4	500,50	199 335 671	15	23,80	199 350 027	7	548,60
199 335 147	4	852,50	199 335 672	15	23,80	199 350 028	7	548,60
199 335 148	4	852,50	199 335 673	15	23,80	199 350 029	7	548,60
199 335 149	4	852,50	199 335 674	15	23,80	199 350 030	7	861,40
199 335 150	4	986,50	199 335 675	15	23,80	199 350 031	7	861,40
199 335 151	4	986,50	199 335 676	15	23,80	199 350 032	7	861,40
199 335 152	4	986,50	199 335 677	15	23,80	199 350 040	7	247,60
199 335 255	25	86,00	199 335 678	15	23,80	199 350 041	7	247,60
199 335 256	25	86,00	199 335 679	15	23,80	199 350 042	7	296,30
199 335 257	25	99,00	199 335 680	15	23,80	199 350 043	7	296,30
199 335 258	25	99,00	199 335 681	15	23,80	199 350 044	7	343,60
199 335 259	25	107,90	199 335 682	15	23,80	199 350 045	7	343,60
199 335 260	25	107,90	199 335 685	15	23,80	199 350 046	7	343,60
199 335 261	25	107,90	199 335 686	15	23,80	199 350 047	7	537,10
199 335 262	25	146,60	199 335 687	15	23,80	199 350 048	7	537,10
199 335 263	25	146,60	199 335 688	15	23,80	199 350 049	7	537,10
199 335 264	25	146,60	199 335 689	15	23,80	199 350 050	7	834,80
199 335 265	25	297,90	199 335 690	15	23,80	199 350 051	7	834,80
199 335 266	25	297,90	199 335 691	15	23,80	199 350 052	7	834,80
199 335 267	25	297,90	199 335 692	15	23,80	199 350 100	6	289,30
199 335 270	25	95,50	199 335 693	15	23,80	199 350 101	6	289,30
199 335 271	25	95,50	199 335 694	15	23,80	199 350 102	6	342,40
199 335 272	25	109,30	199 335 695	15	23,80	199 350 103	6	342,40
199 335 273	25	109,30	199 335 696	15	23,80	199 350 104	6	407,60
199 335 274	25	120,50	199 335 697	15	23,80	199 350 105	6	407,60
199 335 275	25	120,50	199 335 861	15	23,80	199 350 106	6	407,60
199 335 276	25	120,50	199 335 862	15	23,80	199 350 107	6	654,10
199 335 277	25	201,60	199 335 863	15	23,80	199 350 108	6	654,10
199 335 278	25	201,60	199 335 864	15	23,80	199 350 109	6	654,10
199 335 279	25	201,60	199 335 865	15	23,80	199 350 110	6	832,00
199 335 280	25	392,60	199 335 866	15	23,80	199 350 111	6	832,00
199 335 281	25	392,60	199 335 867	15	23,80	199 350 112	6	832,00
199 335 282	25	392,60	199 335 868	15	23,80	199 350 120	6	361,90
199 335 285	25	130,20	199 335 869	15	23,80	199 350 121	6	361,90
199 335 286	25	130,20	199 335 870	15	23,80	199 350 122	6	416,50
199 335 287	25	149,70	199 335 871	15	23,80	199 350 123	6	416,50
199 335 288	25	149,70	199 335 872	15	23,80	199 350 124	6	508,40
199 335 289	25	164,00	199 335 873	15	23,80	199 350 125	6	508,40
199 335 290	25	164,00	199 335 895	28	226,90	199 350 126	6	508,40
199 335 291	25	164,00	199 335 896	28	236,40	199 350 127	6	816,80
199 335 292	26	249,40	199 335 974	26	43,30	199 350 128	6	816,80
199 335 293	26	249,40	199 335 975	26	51,30	199 350 129	6	816,80
199 335 294	26	249,40	199 350 000	7	204,60	199 350 130	6	1.039,20
199 335 295	26	485,10	199 350 001	7	204,60	199 350 131	6	1.039,20
199 335 296	26	485,70	199 350 002	7	243,10	199 350 132	6	1.039,20
199 335 297	26	485,10	199 350 003	7	243,10	199 350 140	6	358,50
199 335 460	26	244,80	199 350 004	7	275,90	199 350 141	6	358,50
199 335 474	26	288,90	199 350 005	7	275,90	199 350 142	6	432,90
199 335 655	14	23,80	199 350 006	7	275,90	199 350 143	6	432,90
199 335 656	14	23,80	199 350 007	7	438,90	199 350 144	6	515,50
199 335 657	14	23,80	199 350 008	7	438,90	199 350 145	6	515,50
199 335 658	14	23,80	199 350 009	7	438,90	199 350 146	6	515,50

Index

Code	pagina	EUR	Code	pagina	EUR	Code	pagina	EUR
199 350 147	6	878,00	199 350 674	16	23,80	721 500 408	31	4,00
199 350 148	6	878,00	199 350 675	16	23,80	721 500 409	31	4,70
199 350 149	6	878,00	199 350 676	16	23,80	721 500 410	31	8,90
199 350 150	6	1.016,10	199 350 677	16	23,80	721 500 411	31	13,20
199 350 151	6	1.016,10	199 350 678	16	23,80	721 600 004	32	11,60
199 350 152	6	1.016,10	199 350 679	16	23,80	721 600 005	32	12,60
199 350 255	22	87,10	199 350 680	16	23,80	721 600 006	32	13,20
199 350 256	22	87,10	199 350 681	16	23,80	721 600 007	32	14,60
199 350 257	22	100,00	199 350 682	16	23,80	721 600 008	32	17,20
199 350 258	22	100,00	199 350 685	16	23,80	721 600 009	32	22,00
199 350 259	22	109,00	199 350 686	16	23,80	721 600 010	32	35,70
199 350 260	22	109,00	199 350 687	16	23,80	721 600 011	32	44,20
199 350 261	22	109,00	199 350 688	16	23,80	721 600 012	32	52,10
199 350 262	22	148,40	199 350 689	16	23,80	721 600 013	32	62,00
199 350 263	22	148,40	199 350 690	16	23,80	721 600 014	32	80,80
199 350 264	22	148,40	199 350 691	16	23,80	721 600 305	31	3,60
199 350 265	22	301,10	199 350 692	16	23,80	721 600 306	31	7,70
199 350 266	22	301,10	199 350 693	16	23,80	721 600 307	31	10,50
199 350 267	22	301,10	199 350 694	16	23,80	721 600 654	31	8,90
199 350 270	22	96,90	199 350 695	16	23,80	721 600 655	31	8,20
199 350 271	22	96,90	199 350 696	16	23,80	721 600 656	31	8,00
199 350 272	22	110,60	199 350 697	16	23,80	721 600 657	31	8,90
199 350 273	22	110,60	199 350 755	17	23,80	721 600 658	31	13,20
199 350 274	22	121,80	199 350 756	17	23,80	721 600 659	31	19,20
199 350 275	22	121,80	199 350 757	17	23,80	721 600 660	31	24,00
199 350 276	22	121,80	199 350 758	17	23,80	721 600 661	31	24,00
199 350 277	22	204,10	199 350 759	17	23,80	721 690 011	24	16,50
199 350 278	22	204,10	199 350 760	17	23,80	721 890 008	24	7,20
199 350 279	22	204,10	199 350 761	17	23,80	721 890 009	24	8,00
199 350 280	22	396,90	199 350 762	17	23,80	721 890 010	24	12,80
199 350 281	22	396,90	199 350 763	17	23,80	723 690 008	24	12,00
199 350 282	22	396,90	199 350 764	17	23,80	723 690 009	24	13,70
199 350 285	22	131,70	199 350 765	17	23,80	723 690 010	24	23,00
199 350 286	22	131,70	199 350 766	17	23,80	723 690 011	24	29,10
199 350 287	22	151,10	199 350 767	17	23,80	724 600 206	37	4,50
199 350 288	22	151,10	199 350 895	24	226,90	724 600 207	37	5,00
199 350 289	22	165,60	199 350 896	24	236,40	724 600 208	37	5,60
199 350 290	22	165,60	700 246 419	32	162,50	724 600 209	37	7,40
199 350 291	22	165,60	700 246 420	33	130,70	724 600 210	37	10,30
199 350 292	22	252,00	700 256 401	34	55,40	724 600 211	37	16,20
199 350 293	22	252,00	720 600 236	36	11,30	724 600 212	37	35,20
199 350 294	22	252,00	720 600 237	36	15,40	724 600 213	37	63,90
199 350 295	22	490,50	720 600 238	36	18,40	724 600 655	35	55,20
199 350 296	22	490,50	720 600 239	36	27,70	724 600 656	35	57,80
199 350 297	22	490,50	720 600 240	36	35,20	724 600 657	35	62,00
199 350 655	16	23,80	720 600 241	36	52,10	724 600 658	35	67,90
199 350 656	16	23,80	720 600 242	36	131,90	724 600 659	35	97,80
199 350 657	16	23,80	720 600 243	36	242,10	724 600 660	35	108,50
199 350 658	16	23,80	720 600 246	37	13,40	724 600 661	35	142,10
199 350 659	16	23,80	720 600 247	37	18,00	724 600 705	36	57,80
199 350 660	16	23,80	720 600 248	37	23,20	724 600 706	36	60,80
199 350 661	16	23,80	720 600 249	37	34,90	724 600 707	36	64,60
199 350 662	16	23,80	720 600 250	37	43,00	724 600 708	36	68,70
199 350 663	16	23,80	720 600 251	37	63,90	724 600 709	36	101,70
199 350 664	16	23,80	720 600 252	37	170,70	724 600 710	36	110,10
199 350 665	16	23,80	720 600 253	37	284,90	724 600 711	36	181,70
199 350 666	16	23,80	720 600 257	37	23,00	724 600 806	37	6,60
199 350 667	16	23,80	720 600 258	37	28,40	724 600 807	37	6,20
199 350 670	16	23,80	720 600 268	37	28,40	724 600 808	37	7,90
199 350 671	16	23,80	721 500 405	31	2,80	724 600 809	37	13,20
199 350 672	16	23,80	721 500 406	31	2,80	724 600 810	37	15,20
199 350 673	16	23,80	721 500 407	31	3,10	724 600 811	37	21,40

Index

Code	pagina	EUR	Code	pagina	EUR
724 600 812	37	45,00	748 410 014	23, 27	8,00
724 600 813	37	80,30	749 410 008	23, 27	11,00
724 605 505	36	37,20	749 410 009	23, 27	18,70
724 605 506	36	43,00	749 410 010	23, 27	20,10
724 605 507	36	49,60	749 410 011	23, 27	23,30
724 605 508	36	54,00	749 410 014	23, 27	36,70
724 605 509	36	78,40	753 508 606	33	6,20
724 605 510	36	89,30	753 508 607	33	8,20
724 605 511	36	114,30	753 508 608	33	8,20
727 500 105	34	3,40	753 508 609	33	13,30
727 500 106	34	3,50	753 508 610	33	13,30
727 500 107	34	4,00	753 508 611	33	14,80
727 500 108	34	4,40	753 608 612	33	22,00
727 500 109	34	5,80	753 608 613	33	26,60
727 500 110	34	7,10	753 608 614	33	36,60
727 500 111	34	7,50			
727 500 312	34	33,00			
727 500 313	34	41,80			
727 500 314	34	51,30			
727 508 212	34	23,20			
727 508 213	34	28,40			
727 508 214	34	39,30			
727 508 506	34	7,10			
727 508 507	34	8,70			
727 508 508	34	8,70			
727 508 509	34	14,20			
727 508 510	34	14,20			
727 508 511	34	15,90			
727 508 512	34	23,20			
727 508 513	34	28,40			
727 508 514	34	39,30			
727 608 412	35	23,20			
727 608 413	35	28,40			
727 608 414	35	39,30			
727 608 516	35	6,60			
727 608 517	35	7,90			
727 608 518	35	9,70			
727 608 519	35	12,60			
727 608 520	35	13,10			
727 608 521	35	19,00			
727 690 408	24	17,40			
727 690 409	24	23,50			
727 690 410	24	36,10			
727 690 411	24	58,10			
729 690 408	24	6,60			
729 690 409	24	9,00			
729 690 410	24	13,10			
729 690 411	24	16,20			
734 600 106	32	4,30			
734 600 107	32	4,80			
734 600 108	32	5,50			
734 600 109	32	7,10			
734 600 110	32	8,50			
734 600 111	32	9,40			
735 690 408	24	45,70			
735 690 409	24	63,10			
735 690 410	24	91,80			
735 690 411	24	143,20			
748 410 008	23, 27	5,80			
748 410 009	23, 27	5,80			
748 410 010	23, 27	5,80			
748 410 011	23, 27	6,10			

Verkoopvoorwaarden

Deze algemene verkoopvoorwaarden zijn van toepassing op alle door Georg Fischer N.V. geleverde producten en verrichte diensten. Hieronder vindt u, in het Engels, alle geldende verkoopwaarden die geldig zijn bij uw aankopen.

General Terms and Conditions of Sale – GF Piping Systems - English

1. General

1.1. These general terms and conditions of sale (hereinafter referred to as "**General Terms and Conditions**") shall apply to all products supplied and services performed by Georg Fischer N.V. (hereinafter referred to as "**GF**") towards the Purchaser (hereinafter referred to as "**Products**"). They shall also apply to all future business even when no express reference is made to these General Terms and Conditions.

1.2. Any legal transactions (one-, two-, as well as multi-sided legal transactions, e.g. conclusion, disputing, contesting etc.) on the part of GF and Purchaser must be in writing in order to be valid.

Provisions deviating or supplementing these General Terms and Conditions, especially Purchaser's general terms and conditions of purchase and verbal agreements shall only be applicable if accepted in writing by GF or if they favor GF.

The written form shall be deemed complied with all forms of transmission, evidenced in the form of text, e-mail, etc. Excluded thereof shall be the transmission by fax.

1.3. Offers shall only be binding if they contain a specifically stated period for acceptance.

2. Scope of supplies

2.1. GF's product range is subject to change without prior notice.

2.2. The order confirmation shall govern the scope and execution of the contract.

2.3. GF shall be entitled to hire subcontractors.

3. Local Laws and Regulations, Export Controls

3.1. The Purchaser shall bring to the attention of GF all local laws and regulations at the place of destination which bear connection with the execution of the contract and the adherence to relevant safety regulations and approval procedures.

3.2. Unless otherwise agreed in accordance with Clause 3.1, the supplies shall comply with the regulations and standards at GF's registered office.

3.3. In case of re-exports, the Purchaser shall be responsible for compliance with pertinent export control regulations.

4. Price

4.1. Unless agreed otherwise, the prices shall be deemed to be in EUR, net, EXW (Incoterms 2020 of the ICC, or latest version) at the production site of GF, including standard packing.

4.2. If contrary to EXW (Incoterms 2020 of the ICC, or latest version), at the production site of GF, costs of any kind, in particular all supplementary costs, such as the cost of carriage, freight, insurance, export, transit and import licenses etc. as well as all types of taxes, fees, duties, etc. connected with the contract., shall be borne by GF, GF reserves the right to adjust the prices accordingly in the event of a change in costs.

4.3. If the Products are provided with additional packaging over and above the standard packaging, such packaging shall be charged additionally.

5. Terms of Payment

5.1. The Purchaser shall make payments at the place of GF within thirty (30) days of receipt of invoice without any deductions, such as discounts, costs, taxes or dues.

5.2. The Purchaser shall only have a right of set-off against counterclaims that are either undisputed by GF or legally established to the Purchaser by a court of competent jurisdiction.

The Purchaser shall have no right to withhold payments due if unessential parts of the delivery are still pending provided that the use of the delivery is not rendered unusable as a result.

5.3. If the advance payment or the contractually agreed securities have not been made on time, GF shall be entitled to adhere to or to rescind the contract and shall in both cases be entitled to claim damages.

5.4. If the Purchaser, for any reason, is in delay with a payment, or if GF is seriously concerned that GF will not receive payments in total or in due time because of circumstances having taken place since entering into the contract, GF, without being limited in its rights provided for by law, shall be entitled to refuse the further performance of the contract and to retain the Products ready for dispatch until new terms of payment and delivery will have been agreed and until GF will have received satisfactory securities. If such an agreement cannot be reached within a reasonable time, or if GF does not receive adequate securities, GF shall be entitled to rescind the contract and to claim damages.

5.5. If the Purchaser does not adhere to the agreed terms of payment, the Purchaser shall be liable without reminder, for default interest to the amount of eight (8) percent of the contract price with effect from the agreed date on which the payment was due. The right to claim further damages is reserved.

6. Reservation of Title

6.1. As far as acknowledged by the jurisdiction in the respective country of destination of the goods, the further provisions of this Clause 6 shall apply. In any case, they shall be considered separable from each other in terms of content and linguistics and shall apply to themselves.

6.2. Simple reservation

GF retains title to all goods delivered by GF until full payment of the respective claims of GF.

6.3. Processing or transformation of the goods supplied by GF by the Purchaser is always carried out for GF. If the goods supplied are processed or inseparably combined or mixed with objects not belonging to GF, co-ownership of the new object shall be acquired in proportion to the value of the goods supplied by GF to the other processed objects at the time of processing or in proportion to the value of the goods supplied by GF to the other combined or mixed objects at the time of combination or mixing. If the goods are combined or mixed by the Purchaser with other objects to form a single object and if the other object is to be regarded as the main object, the Purchaser is obliged to transfer co-ownership to GF on a pro rata basis insofar as the main object belongs to the Purchaser. The Purchaser shall detain the sole ownership or co-ownership on behalf of GF.

6.4. During the period of reservation of title, the Purchaser shall at his own cost maintain the supplies and insure them for the benefit of GF against theft, breakdown, fire, water and other risks. The Purchaser shall further take all measures to ensure that GF's title is in no way compromised or rescinded.

6.5. Extended reservation of title

6.5.a. Should the Purchaser resell Products to which title is reserved, in the ordinary course of business, the Purchaser shall hereby be deemed to have tacitly assigned to GF the proceeds deriving from their sale together with all collateral rights, securities and reservations of title until all claims held by GF have been settled.

6.5.b. The Purchaser is authorized to collect the assigned receivables, as long as the Purchaser fulfills his payment obligation towards GF in accordance with the contract.

6.6. Overall reservation of title

6.6.a. The requirements to be met from Clause 6.2 extends to all current and future demands of GF towards the Purchaser.

6.6.b. The assignment is only valid insofar as the value of the Products subject to retention of title together with the granted securities exceeds GF's claims against the Purchaser by more than 20%.

7. Terms of Delivery

7.1. Unless otherwise agreed (see Clause 4), the Products shall be delivered EXW (Incoterms 2020 of the ICC, or latest version) production site of GF.

7.2. The term of delivery shall commence as soon as the contract has been entered into, all official formalities, such as import and payment permits have been obtained and all essential technical issues have been settled.

The term of delivery and the delivery dates shall be deemed duly observed when, upon its expiry or on the day of the delivery date, the Products are ready for dispatch.

7.3. Part shipments to a reasonable extent shall be allowed and GF shall be entitled to invoice for such partial deliveries.

7.4. **Delivery is subject to the following conditions, i.e. the delivery time shall be reasonably extended, respectively the delivery date postponed,**

7.4.a. if the information of the Customer required by GF for the performance of the contract is not received in time, or if the Customer subsequently changes it, thereby causing a delay in the delivery of the supplies;

7.4.b. if GF is prevented from performing the contract by force majeure. In particular, force majeure shall be deemed to be any unforeseeable event beyond GF's control which renders GF's performance commercially unreasonable or impossible, such as delayed or defective supplies from subcontractors, labor disputes, governmental orders or regulations, shortages in materials or energy, serious disturbances in GF's works, such as the total or partial destruction of plant and equipment or the breakdown of essential facilities, serious disruptions in transport facilities, e.g. impassable roads.

Should the effect of force majeure exceed a period of six (6) months, either party may terminate the contract effective forthwith.

In no event, GF shall be liable for any damage or loss of any kind whatsoever arising out of or caused by such an event of force majeure.

7.4.c. if the Purchaser is in delay with the fulfillment of his obligations under the contract, in particular, if the Purchaser does not adhere to the agreed conditions of payment or if he has failed to timely provide the agreed securities.

7.5. If for reasons attributable to GF the agreed term of delivery or a reasonable extension thereof is exceeded, GF shall not be deemed in default until the Purchaser has granted to GF in writing a reasonable extension thereof of not less than two (2) weeks which is equally not met.

The Purchaser shall then be entitled to the remedies provided at law, it being however understood that, subject to limitations of Clause 10, damage claims shall be limited to max. ten (10) percent of the price of the delayed delivery.

7.6. If the Purchaser fails to take delivery within a reasonable time of Products notified as ready for dispatch, GF shall be entitled to store the Products at the Purchaser's expense and risk and to invoice them as delivered. If the Purchaser fails to effect payment pursuant to the terms of payment, GF shall be entitled to dispose of the Products. GF undertakes to inform the Purchaser of the consequences of his actions or omission.

7.7. In the event of damage or loss of the Products during carriage, the Purchaser shall mark the delivery documents accordingly and immediately have the damage ascertained by the carrier. Not readily ascertainable damages sustained during carriage shall be notified by the Purchaser to the carrier within six (6) days after receipt of the Products.

7.8. If, contrary to the agreed terms of delivery, GF or the Purchaser take on tasks (e.g. transport, loading or unloading of the deliverables, insurance, etc.) which are not their responsibility but the contracting parties, these tasks shall be deemed to have been performed on behalf of and for the account of the respectively contracting party responsible. In this sense, the person executing the order acts as a vicarious agent for the responsible contracting party.

7.9. Should the Purchaser cancel an order without justification and should GF not insist on the performance of the contract, GF shall be entitled to a contractual penalty amounting to ten (10) percent of the contract price, without prejudice GF's right to claim compensation.

Parties hereby exclude the applicability of article 6:92 of the Dutch Civil Code with regard to the contractual penalty included in this clause.

8. Inspection, Notification of Defect and Damages

8.1. The Products will be subject to normal inspection by GF during manufacture. Additional tests required by the Purchaser shall be agreed upon in writing and shall be charged to the Purchaser.

8.2. It shall be a condition of GF's obligation under the warranties stated hereinafter that GF is notified in writing by the Purchaser of any purported defect immediately upon discovery. Notice concerning weight, numbers or apparent defects is to be given within thirty (30) days from receipt of the Products, notice of other defects immediately latest within seven (7) working days after discovery, in any event within the warranty period.

8.3. The Purchaser shall not dispose of allegedly defective Products until all warranty and/or damage claims are finally settled. At its request, defective Products are to be placed at GF's disposal.

8.4. At its request, GF shall be given the opportunity to inspect the defect and/or damage, prior to commencement of remedial work, either by itself or by a third party.

9. Warranty, liability for defects

9.1. Warranty

9.1.a. The warranty is, unless otherwise explicitly agreed, not transferable and limited to the country in which the representative of GF is located with whom the contract was concluded. Warranty claims must be made in the country in which the product in question was purchased.

9.1.b. The warranty or damage claims become time-barred twelve (12) month from receipt of the Products by the end user but at the latest within eighteen (18) months of the Products being dispatched by GF.

9.1.c. For spare or repaired parts, the warranty period is limited to the initial warranty period of the replaced or repaired part.

9.1.d. For Products manufactured to specifications, drawings or patterns supplied by the Purchaser, GF's warranty shall be restricted to proper materials and workmanship.

9.1.e. This warranty shall not apply to damage resulting from normal wear and tear, improper storage and maintenance, failure to observe the operating instructions, overstressing or overloading, unsuitable operating media, unsuitable construction work or unsuitable building ground, improper repairs or modifications / alterations by the Purchaser or third parties, the use of other than original spare parts and other reasons beyond GF's control.

9.1.f. Claims for deficiency of title becomes time-barred twelve (12) month from receipt of the Products by end user.

9.2. Liability for defects

9.2.a. At the written request of the Purchaser, GF undertakes to repair or replace at its discretion, as quickly as possible and free of charge, all Products supplied which demonstrably suffer from faulty design, materials or workmanship, from faulty operating or installation instructions or which became defective or unusable due to faulty advice.

9.2.b. Replaced parts shall be handed over to GF and become property of GF, unless GF waives this right.

9.2.c. In order to protect employees from toxic or radioactive substances which may have been transported in the Products concerned, defective parts returned to GF or its sales organizations, must be accompanied by a Material Safety disclosure Form. The form may be obtained from GF's local sales company.

9.2.d. The Purchaser shall be entitled to rescind the contract or to demand a reduction of the contract price if

- 9.2.e. the repair or replacement of the defective Product is impossible,
- 9.2.f. the defective Product is not repaired or replaced within a reasonable period, or
- 9.2.g. if GF refuses the repair or replacement of the defective Product or if for reasons attributable to GF the repair or replacement is delayed.
- 9.2.h. In case of Products for use in domestic installations or in utilities
- 9.2.i. GF will assume, in deviation to Clause 10.3, the dismantling and installation costs for the restoration of the original condition of the defective Product up to a maximum amount of EUR 1'000'000 per occurrence.
- 9.2.j. warranty and damage claims - contrary to Clause 9.1.b — shall become time-barred five (5) years from the date of installation or seven (7) years from the production date, whichever is earlier.

10. Limitation of Liability

- 10.1. The rights and remedies of the Purchaser shall be exclusively governed by these General Terms and Conditions. All further claims such as damages, reduction of the purchase price, termination or rescission of the contract are excluded.
- 10.2. In no case, whatsoever, shall the Purchaser be entitled to claim damages other than compensation for costs of remedying defects in the supplies. This in particular refers, but shall not be limited, to loss of production, loss of use, loss of orders, loss of profit, third party recovery claims and other direct or indirect or consequential damages.
- 10.3. Save where it concerns willful intent, gross negligence or product liability, in the event that claims of the Purchaser in relation to or in connection with the contract or the breach thereof should exist, the total amount of such claims is restricted to the purchase price of respective delivery.
- 10.4. This limitation of liability equally applies to the extent GF is liable for acts or omissions of auxiliary persons such as its employees or third parties engaged for the performance of its obligations. It does not apply in case of unlawful intent or gross negligence on the part of GF and in case of GF's mandatory statutory liability, in particular under applicable product liability laws.

11. Data and Documents

- 11.1. Technical documents, such as drawings, descriptions, illustrations and data on dimensions, performance and weight as well as the reference to standards are for information purposes only. They are not warranted characteristics and are subject to change.

11.2. All technical documents shall remain the exclusive property of GF and may only be used for the purposes agreed between the parties or as GF may consent.

12. Confidentiality, Protection of Personal Data

12.1. Each party shall keep in strict confidence all commercial or technical information relating to the business of the other party, of which it has gained knowledge in the course of its dealing with the other party. Such information shall neither be disclosed to third parties nor used for other purposes than the agreed.

12.2. Personal data will only be processed by GF in accordance with the relevant laws and exclusively based on a separate contract submitted by GF.

13. Severability

Should any term or clause of these General Terms and Conditions in whole or in part be found to be unenforceable or void, all other provisions shall remain in full force and effect. The unenforceable or void provision shall be replaced by a valid provision, which comes closest to the original intention of the unenforceable or invalid provision.

14. Place of Performance, Applicable Law and Jurisdiction

14.1. Place of performance shall be the GF works from which the Products are dispatched.

14.2. The contract shall be governed by Dutch law to the exclusion of any conflict of law provisions and the United Nations Convention on Contracts for the International Sale of Goods (CISG) provisions.

14.3. Exclusive place of jurisdiction for any dispute, controversy or claim arising out of or in relation to this contract, including the validity, invalidity, breach or termination thereof, shall be the ordinary courts in Amsterdam, Netherlands. However, GF reserves the right to file actions in any court having jurisdiction.

01/2021

Georg Fischer N.V.

Contactinformatie

Georg Fischer N.V.
Lange Veenteweg 19, 8161 PA Epe
Postbus 35, 8160 AA Epe
Telefoon: 0578 - 678222
Faxnummer: 0578 - 621768
E-mail: nl.ps@georgfischer.com
Internet: www.georgfischer.nl



De technische gegevens zijn niet bindend en bieden geen garantie ten aanzien van de producteigenschappen. Ze zijn onderhevig aan wijzigingen. Raadpleeg onze Algemene Leveringsvoorwaarden.

Prijslijst Variabele doorstroommeters (02.24)

© Georg Fischer N.V.

NL 8161 PA - 19 Epe



Van Dijk Leidingsystemen B.V.
Baileystraat 1
8013 RV Zwolle
Industrieterrein Marslanden G
Tel. 038-4226838
www.vandijkleidingsystemen.nl
info@vandijkleidingsystemen.nl